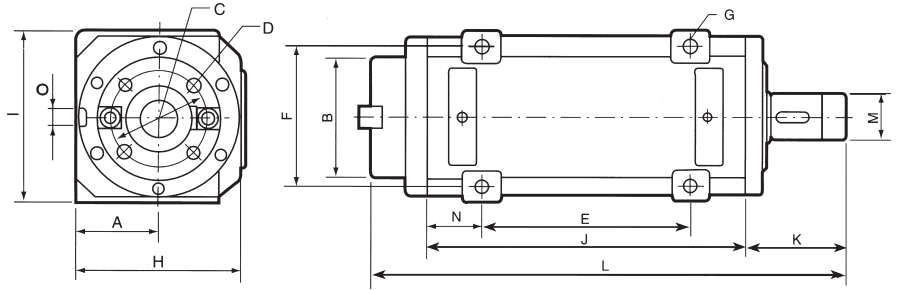




Precision Boring / Milling Spindle Head



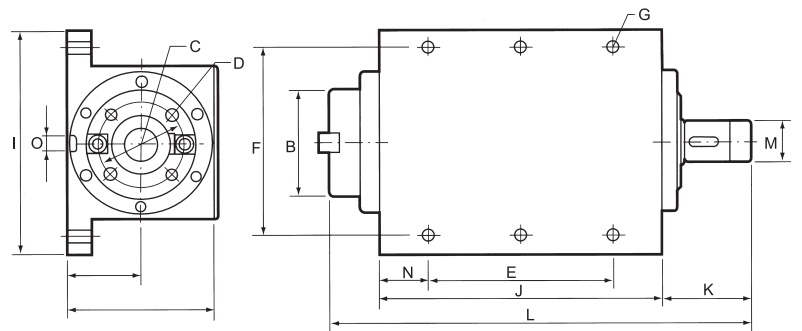
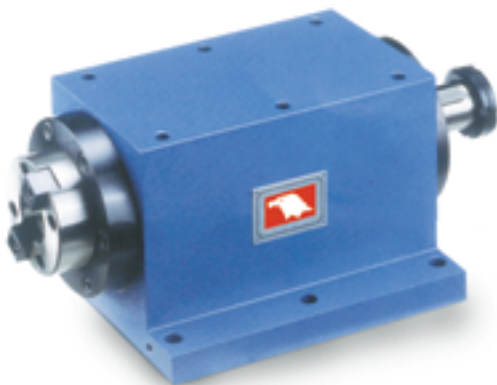
• Specifications

Unit: mm

ORDER NO.	TAPER	MAX.RPM	A	B	C	D	E	F	G	H	I	J	K	L	M	N	O	WEIGHT kgs	BEARING O.D.	CODE NO.
SH03	MT3	7000	45	∅ 42			80	70	∅ 9-4	90	90	160	75	270	∅ 25	35	16x5	8kg	∅ 62 ∅ 55	7002-600
SH04	MT4	2500	70	∅ 88.882			190	90	∅ 15-4	145	150	280	94	427	∅ 35	45	16x5	36kg	∅ 90	7002-601
SH30	NT30	3000	55	∅ 69.832	∅ 54	M10xP1.5-4	120	90	∅ 11-4	114	114	200	72	317	∅ 30	40	16x5	18kg	∅ 75	7002-603
SH40	NT40	2500	70	∅ 88.882	∅ 66.7	M12xP1.75-4	190	150	∅ 15-4	170	184	280	106	427	∅ 35	45	16x5	39kg	∅ 90	7002-605
SH50	NT50	2000	85	∅ 128.57	∅ 101.6	M16xP2.0-4	220	150	∅ 15-4	170	184	340	106	500	∅ 50	60		75kg	∅ 115	7002-607



Precision Boring / Milling Spindle Head



• Specifications

Unit: mm

ORDER NO.	TAPER	MAX.RPM	A	B	C	D	E	F	G	H	I	J	K	L	M	N	O	WEIGHT kgs	BEARIN O.D.	CODE NO.
SH30A	NT30	3000	77	∅ 69.832	∅ 54	M10xP1.5-4	160	140	∅ 11-6	133	176	200	72	317	∅ 30	10	16x5	22kg	∅ 75	7002-620
SH30B	NT30	9000	77	∅ 69.832	∅ 54	M10xP1.5-4	160	140	∅ 11-6	133	176	200	72	317	∅ 30	10	16x5	22kg	∅ 75	7002-621
SH40A	NT40	2500	77	∅ 88.882	∅ 66.7	M12xP1.75-4	180	170	∅ 11-6	147	200	220	94	367	∅ 35	20	16x5	45kg	∅ 90	7002-622
SH40B	NT40	8000	77	∅ 88.882	∅ 66.7	M12xP1.75-4	180	170	∅ 11-6	147	200	220	94	367	∅ 35	20	16x5	45kg	∅ 90	7002-623