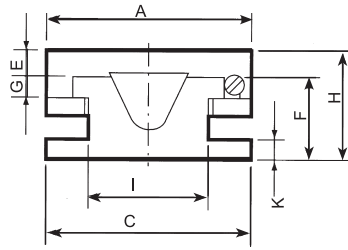
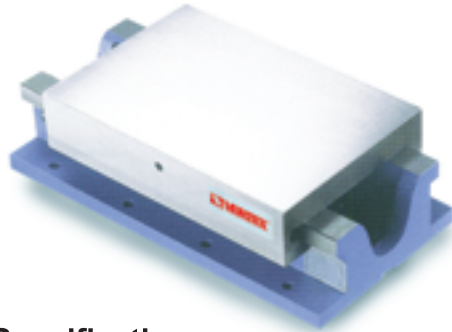




Economic H Type Slide Table



- Material : FC-30
- Precision : $\pm 0.01 / 100\text{mm}$
- FEATURE : The sliding surfaces are treated by heat-treatment & precision ground The slide used V type.

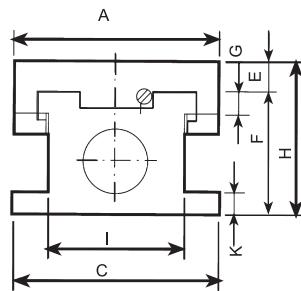
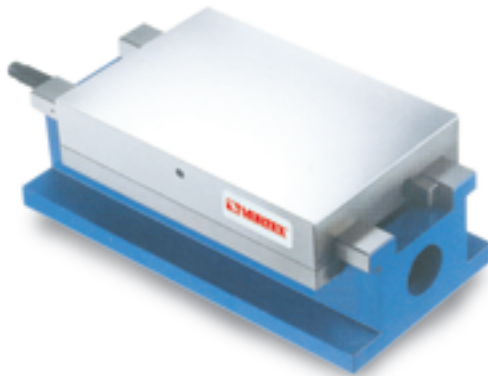
•Specifications

Unit: mm

| ORDER NO. | A x B Table surface | C x D Base area | H | E | F | G | K | I | CYLINDER OF THROUGH HOLE | WEIGHT kgs | CODE NO. |
|-----------|------------------------|--------------------|-----|----|----|----|----|-----|--------------------------------|---------------|-------------|
| STB-1630 | 160x200 | 160x300 | 90 | 20 | 60 | 17 | 20 | 90 | U TYPE | 19 | 7002-501 |
| STB-1640 | 160x200 | 160x400 | 90 | 20 | 60 | 20 | 20 | 90 | U TYPE | 22 | 7002-502 |
| STB-2040 | 200x300 | 200x400 | 120 | 30 | 90 | 20 | 20 | 120 | U TYPE | 38 | 7002-503 |
| STB-2060 | 200x300 | 200x600 | 120 | 30 | 90 | 20 | 20 | 120 | U TYPE | 48 | 7002-504 |
| STB-2080 | 200x300 | 200x800 | 120 | 30 | 90 | 20 | 20 | 120 | U TYPE | 60 | 7002-505 |
| STB-20100 | 200x300 | 200x1000 | 120 | 30 | 90 | 20 | 20 | 120 | U TYPE | 70 | 7002-506 |



Power H Type Slide Table



- Material : FC-30
- Precision : $\pm 0.01 / 100\text{mm}$
- FEATURE : The sliding surfaces are treated by heat-treatment & precision ground

•Specifications

Unit: mm

| ORDER NO. | A x B Table surface | C x D Base area | H | E | F | G | K | I | CYLINDER OF THROUGH HOLE | WEIGHT kgs | CODE NO. |
|-----------|------------------------|--------------------|-----|----|-----|----|----|-----|--------------------------------|---------------|-------------|
| STC-2040 | 200x300 | 200x400 | 150 | 30 | 120 | 20 | 25 | 132 | 65 ϕ | 50 | 7002-520 |
| STC-2050 | 200x300 | 200x500 | 150 | 30 | 120 | 20 | 25 | 132 | 65 ϕ | 58 | 7002-521 |
| STC-2060 | 200x300 | 200x600 | 150 | 30 | 120 | 20 | 25 | 132 | 65 ϕ | 65 | 7002-522 |
| STC-3050 | 300x350 | 300x500 | 188 | 39 | 145 | 25 | 28 | 213 | 75 ϕ | 98 | 7002-524 |
| STC-3070 | 300x350 | 300x700 | 188 | 39 | 145 | 25 | 28 | 213 | 75 ϕ | 120 | 7002-525 |
| STC-3080 | 300x350 | 300x800 | 188 | 39 | 145 | 25 | 28 | 213 | 75 ϕ | 135 | 7002-526 |