



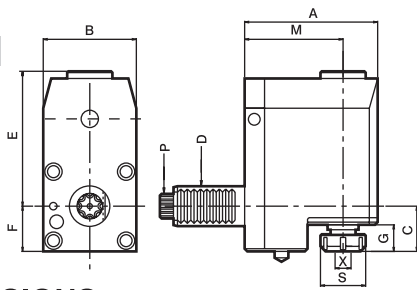
Radial Drilling And Milling Heads

TYPE DIN 5482

BACKWARDS

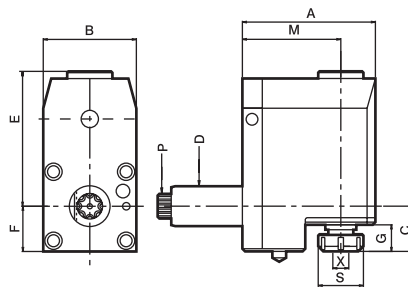
MODE: BL

LEFT-HAND



MODE: BR

RIGHT-HAND



- To be used for collet DIN 6499
- Collet is not included.
- External coolant supply

DIMENSIONS

Order No.	D DIN 69880	X Capacity	S	Maximum R.P.M.	i	A	B	C	E	F	G	M	P DIN 5482	CODE NO.
BR3054822569 BL3054822569	30	1-16 ER25	42	5000	1:1	95	60	42	75.5	31.5	28.5	69	B15X12	5006-079
BR4054823290 BL4054823290	40	2-20 ER32	50	5000	1:1	124	80	44	110	42	34	90	B17X14	5006-080
BR5054824090 BL5054824090	50	3-26 ER40	63	5000	1:1	129	86	49	112	45	39	90	B20X17	5006-081
BR60548250102 BL60548250102	60	10-34 ER50	78	5000	1:1	147	104	83	118	54	42	102	B25X22	5006-082

Radial Tapping Heads-Backwards

DIMENSIONS

Order No.	D DIN 69880	X Capacity	S	Maximum R.P.M.	i	A	B	C	E	F	G	M	P DIN 5482	CODE NO.
TBR3054821669 TBL3054821669	30	1-10 ER16	32	3000	1:1	95	60	44	75.5	31.5	32	69	B15X12	5006-083
TBR4054822090 TBL4054822090	40	1-13 ER20	35	3000	1:1	24	80	50	110	42	34	90	B17X14	5006-084
TBR5054822590 TBL5054822590	50	2-16 ER25	42	3000	1:1	129	86	54	112	45	36	90	B20X17	5006-085
TBR60548232102 TBL60548232102	60	2-20 ER32	50	3000	1:1	147	104	87	118	54	40	102	B25X22	5006-086

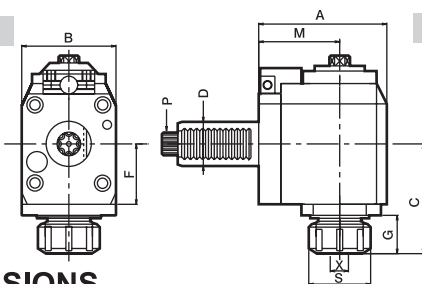


Radial Drilling And Milling Heads

TYPE DIN 5482

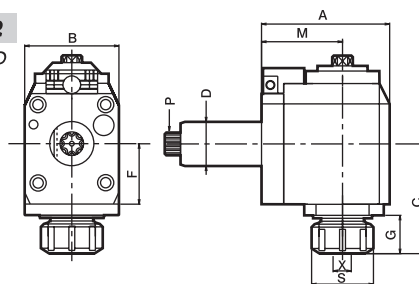
MODE: FL

LEFT-HAND



MODE: FR

RIGHT-HAND



- To be used for collet DIN 6499
- Collet is not included.
- External coolant supply

DIMENSIONS

Order No.	D DIN 69880	X Capacity	S	Maximum R.P.M.	i	A	B	C	F	G	M	P DIN 5482	CODE NO.
FR3054822565 FL3054822565	30	1-16 ER25	42	5000	1:1	97	64	74.5	41	26	65	B15X12	5006-087
FR3054822585 FL3054822585	30	1-16 ER25	42	5000	1:1	117	64	74.5	41	26	85	B15X12	5006-088
FR4054823265 FL4054823265	40	2-20 ER32	50	5000	1:1	99	80	71	40	23	65	B20X17	5006-089
FR4054823285 FL4054823285	40	2-20 ER32	50	5000	1:1	119	80	71	40	23	85	B20X17	5006-090
FR5054824075 FL5054824075	50	3-26 ER40	63	5000	1:1	115	88	103	56	40	75	B25X22	5006-091

Radial Tapping Heads

DIMENSIONS

Order No.	D DIN 69880	X Capacity	S	Maximum R.P.M.	i	A	B	C	F	G	M	P DIN 5482	CODE NO.
TFR3054821665 TFL3054821665	30	1-10 ER16	32	3000	1:1	97	64	75	41	30	65	B15X12	5006-092
TFR3054821685 TFL3054821685	30	1-10 ER16	32	3000	1:1	117	64	75	41	30	85	B15X12	5006-093
TFR4054822065 TFL4054822065	40	1-13 ER20	35	3000	1:1	99	80	70	40	25	65	B20X17	5006-094
TFR4054822085 TFL4054822085	40	1-13 ER20	35	3000	1:1	119	80	70	40	25	85	B20X17	5006-095
TFR5054822575 TFL5054822575	50	1-16 ER25	42	3000	1:1	115	88	103	56	42	75	B25X22	5006-096