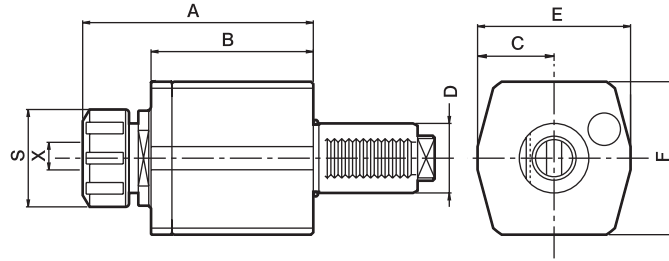
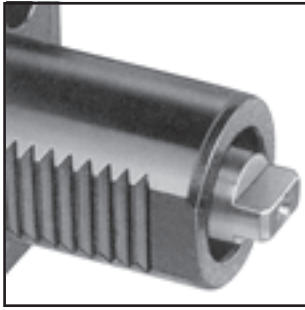




# Axial Drilling And Milling Heads TYPE DIN 1809



Power Transmission According To DIN 1809

- External coolant supply
- Collet is not included.
- To be used for collet DIN 6499

## DIMENSIONS

| Order No.  | D<br>DIN 69880 | X<br>Capacity | S  | Maximum<br>R.P.M. | i   | A   | B  | C  | E   | F   | CODE NO. |
|------------|----------------|---------------|----|-------------------|-----|-----|----|----|-----|-----|----------|
| DA20180916 | 20             | 1-10<br>ER16  | 32 | 6000              | 1:1 | 76  | 48 | 25 | 50  | 50  | 5006-001 |
| DA30180925 | 30             | 1-16<br>ER25  | 42 | 6000              | 1:1 | 101 | 70 | 33 | 66  | 66  | 5006-002 |
| DA40180932 | 40             | 2-20<br>ER32  | 50 | 6000              | 1:1 | 89  | 55 | 39 | 79  | 78  | 5006-003 |
| DA50180940 | 50             | 3-26<br>ER40  | 62 | 6000              | 1:1 | 128 | 85 | 40 | 84  | 88  | 5006-004 |
| DA60180950 | 60             | 10-34<br>ER50 | 78 | 6000              | 1:1 | 154 | 98 | 52 | 104 | 104 | 5006-005 |

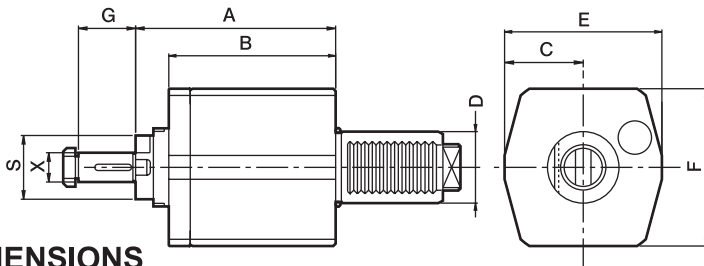
# Axial Tapping Heads

## DIMENSIONS

| Order No.   | D<br>DIN 69880 | X<br>Capacity | S  | Maximum<br>R.P.M. | i   | A   | B  | C  | E   | F   | CODE NO. |
|-------------|----------------|---------------|----|-------------------|-----|-----|----|----|-----|-----|----------|
| TDA30180916 | 30             | 1-10<br>ER16  | 32 | 3000              | 1:1 | 115 | 70 | 33 | 66  | 66  | 5006-006 |
| TDA40180920 | 40             | 1-13<br>ER20  | 35 | 3000              | 1:1 | 120 | 55 | 39 | 79  | 78  | 5006-007 |
| TDA50180925 | 50             | 1-16<br>ER25  | 42 | 3000              | 1:1 | 133 | 85 | 40 | 84  | 88  | 5006-008 |
| TDA60180932 | 60             | 2-20<br>ER32  | 50 | 3000              | 1:1 | 147 | 98 | 52 | 104 | 104 | 5006-009 |



# Axial Milling Heads TYPE DIN 1809



- External coolant and intermediate rings supply.
- To be used for cutter arbor according to DIN 6358

## DIMENSIONS

| Order No.   | D<br>DIN 69880 | X<br>DIN 6358 | S  | Maximum<br>R.P.M. | i   | A    | B  | C  | E  | F  | G  | CODE NO. |
|-------------|----------------|---------------|----|-------------------|-----|------|----|----|----|----|----|----------|
| DA30180916C | 30             | 16            | 32 | 3000              | 1:1 | 91.5 | 70 | 33 | 66 | 66 | 27 | 5006-010 |
| DA40180916C | 40             | 16            | 32 | 3000              | 1:1 | 68.5 | 55 | 39 | 79 | 78 | 27 | 5006-011 |
| DA40180922C | 40             | 22            | 32 | 3000              | 1:1 | 68.5 | 55 | 39 | 79 | 78 | 31 | 5006-012 |
| DA50180922C | 50             | 22            | 40 | 3000              | 1:1 | 117  | 85 | 40 | 84 | 88 | 31 | 5006-013 |
| DA50180927C | 50             | 27            | 40 | 3000              | 1:1 | 117  | 85 | 40 | 84 | 88 | 33 | 5006-014 |