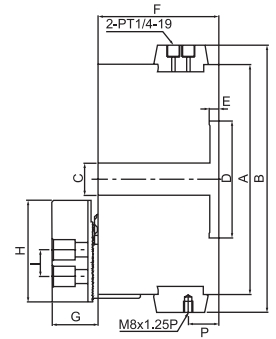
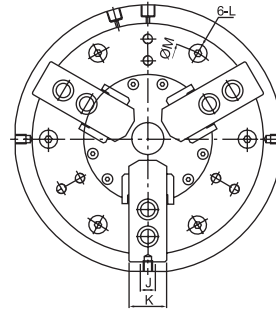
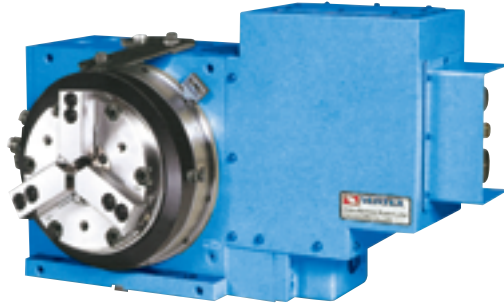




# Rotary Air Chucks

pneumatic chucks series

Example: The VRC - 8 Use on The Index Table



## Light Duty Type

The distinctive feature is that the chuck rotates with the spindle of indexing table or rotary table.

### 1. Airtight type cylinder:

For the cylinder is leak proof; the chuck can maintain stable clamping while it clamps and rotates work piece.

### 2. Rustproof treated cylinder:

The cylinder won't get rusty and seize even in wet or high moisture working environment.

### 3. Easy for connection with air source:

After Connecting to compressed air source, fix the chuck on any direction at one's convenience. It will rotate clockwise and counterclockwise freely as well.

### 4. Dust and water proof cover:

Prevent metal chips or coolant from entering inside of chuck cylinder to maintain its accuracy and make service life longer.

### 5. Integral pneumatic cylinder:

Connect chuck and built-in cylinder to each other directly; thus enables operation stability. Moreover, it is more convenient for installation and operation since the use of draw tube and draw bar are no longer necessary.

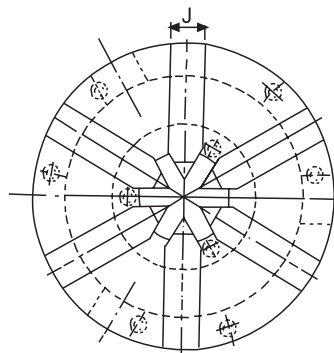
UNIT:mm

ORDER NO.	A	B	C	D	E	F	G	H	I	J	K	L	M	P	Thru-Hole (Diameter) mm	Piston Area cm <sup>2</sup>	Plunger Stroke mm	Jaw Stroke (Diameter) mm	Gripping Force(kgf) (Air press 6kg/cm <sup>2</sup> )	Max. Pressure Setting (kgf/cm <sup>2</sup> )	Max. speed r.p.m	Gripping Range mm	Gross Weight kgs	CODE NO.
VRC-5	136	180	16	60	6	85	33	62	14	10	25	M8	Ø118	27	16	74	10	4.6	1150	7	51	Ø12-Ø136	10	5005-001
VRC-6	166	210	20	80	7	93	40	73	20	12	31	M8	Ø147	27	20	120	13	5.5	2000	7	41	Ø15-Ø166	16.3	5005-002
VRC-8	215	250	30	110	8	112	42	95	25	14	35	M10	Ø185	28	30	190	16	6.8	3200	7	33	Ø20-Ø215	30	5005-003
VRC-10	255	290	43	140	8	120	46	110	30	16	40	M10	Ø220	30.5	43	280	19	8	4700	7	26	Ø33-Ø225	46	5005-004

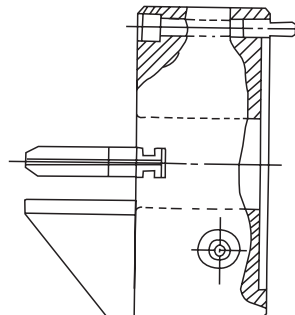


# 6-Jaw Awl Type Chucks

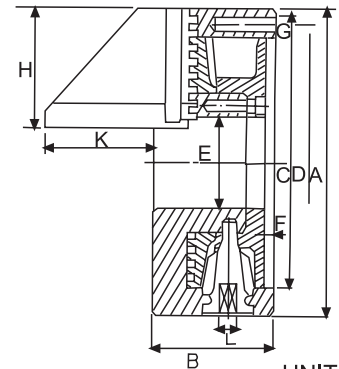
Scroll Chucks Series



Front Hole Type



Back Hole Type



## SPECIFICATION

UNIT:mm

ORDER NO.	A	B	C	D	E	F	G	H	J	K	L	Gross Weight (kg)	Max. speed (r.p.m.)	Max. Gripping Diameter		CODE NO.
															O.D.Clamping	
VAS-4	112	58	80	95	32	4.5	3-M8	45	14	46	8	4.2	1200		Ø2-32	5005-011
VAS-6	167	65	130	147	60	5	3-M10	66	19	43	10	9.2	1200		Ø3-60	5005-012