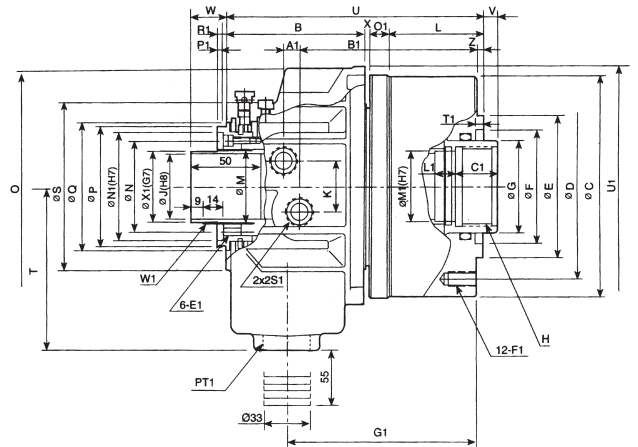
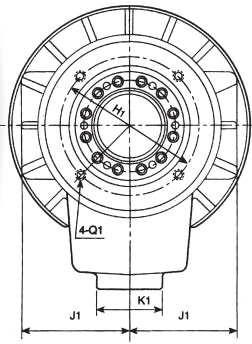




Super High Speed Through Hole Rotary Hydraulic Cylinder



1. Small-sized light weight:

Comparing with the traditional product, it is small-sized (reduced to MAX 95mm) and a light weight (weighted MAX 4.5kg). Make its capacity more stable to reduce the burden of the machinery at high speed turning.

2. The most largest bore:

Comparing with the old product, it has about 20% more bore full diameter for utilizing the capacity of machinery.

3. The safety mechanism:

It can retain the gripping force with a check valve.

SPECIFICATIONS

ORDER NO.	DIM	Piston Dia. (mm)	Piston Area		Piston Stroke (mm)	Max. Draw Bar Pull Force		Max. Operating Pressure (kgf/cm ²)	Max. Speed (r.p.m.)	Moment Inertia I(kgf.m ²)	Weight (kg)	Total Leverage (l/min)	CODE NO.
			Push Side (cm ²)	Pull Side (cm ²)		Push Side KN(kgf)	Pull Side KN(kgf)						
M1036		105	71	68.5	15	24.8(2529)	24(2447)	40.8	8000	0.011	8.6	3.0	5003-001
M1236		125	100	89	15	38(3875)	33(3365)	40.8	7000	0.019	13.0	3.0	5003-002
M1246		125	100	89	15	38(3875)	33(3365)	40.8	7000	0.019	12.0	3.0	5003-003
M1546		155	161	150	22	60(6118)	56(5710)	40.8	6200	0.052	18	3.9	5003-004
M1552		155	161	150	22	60(6118)	56(5710)	40.8	6200	0.052	16.8	3.9	5003-005
M1868		180	198	183	25	75(7546)	69(7036)	40.8	4700	0.095	28.0	4.2	5003-006
M1875		180	198	183	25	75(7546)	69(7036)	40.8	4700	0.095	26.0	4.2	5003-007
M2091		205	252	234	30	94(9585)	88(8973)	40.8	3800	0.15	37.0	4.5	5003-008
M2511		250	348	336	23	124(12644)	120(12236)	40.8	2800	0.45	57	7.0	5003-009

DIMENSION

ORDER NO.	DIM																					
		C1	E1	F1	G1	H1	J1	K1	L1	M1	N1	O1	P1	Q1	R1	S1	T1	U1	W1	X1	B	C
M1036		25	M5x0.8	M10x1.5	126	88	68	53	15	38	64	14	4	M5x0.8	4	PT3/8"	6	136	M44x1.5	42	101	136
M1236		30	M6x1.0	M10x1.5	135	98	76	47	15	38	76	14	4	M5x0.8	6	PT1/2"	6	169	M52x1.5	50	99	154.5
M1246		30	M6x1.0	M10x1.5	135	98	76	47	15	50	76	14	4	M5x0.8	6	PT1/2"	6	169	M52x1.5	50	99	154.5
M1546		30	M6x1.0	M10x1.5	145	110	86	47	15	50	85	14	4	M6x1.0	7	PT1/2"	6	187.5	M58x1.5	56	103	190
M1552		30	M6x1.0	M10x1.5	145	110	86	47	15	55	85	14	4	M6x1.0	7	PT1/2"	6	187.5	M58x1.5	56	103	190
M1868		35	M6x1.0	M10x1.5	166.5	155	101	47	15	70	108	16	4	M6x1.0	7	PT1/2"	6	220	M84x2	81	126	215
M1875		35	M6x1.0	M10x1.5	166.5	155	101	47	15	80	108	16	4	M6x1.0	7	PT1/2"	6	220	M84x2	81	126	215
M2091		35	M6x1.0	M12x1.75	183	165	110	47	15	95	120	16	4	M6x1.0	7	PT1/2"	6	267	M99x2	96	141	240
M2511		45	M6x1.0	M16x2.0	197	206	129	55	20	123	160	18	4	M6x1.0	7	PT1/2"	6	294		134.6	186	310

ORDER NO.	DIM																								
		D	E	F	G	H	J	K	L	M	N	O	P	Q	S	T	U	V _{max}	V _{mix}	W _{max}	W _{mix}	X	Z	A1	B1
M1036		115	100	65	48	M42x1.5	36	32	62	44.6	54	126	73	80	104	115	179.5	10	-5	39	24	2.5	5	11	120.5
M1236		130	100	80	65	M42x1.5	36	36	67	52.6	64	166	85	90	118	114	184	10	-5	40	25	4	5	11	126.5
M1246		130	100	80	65	M55x2	46	36	67	52.6	64	166	85	90	118	114	184	10	-5	40	25	4	5	11	126.5
M1546		170	130	85	70	M55x2	46	36	75	59.6	73	184	96	102	137	130	196	17	-5	47	25	4	5	11	136
M1552		170	130	85	70	M60x2	52	36	75	59.6	73	184	96	102	137	130	196	17	-5	47	25	4	5	11	136
M1868		190	160	120	95	M75x2	68	36	84	84.6	98	215	121	131	166	160	230	20	-5	50	25	4	5	17.5	153.5
M1875		190	160	120	95	M85x2	75	36	84	84.6	98	215	121	131	166	160	230	20	-5	50	25	4	5	17.5	153.5
M2091		215	180	140	110	M100x2	91	36	93	99.6	108	264	138	148	182	185	253	25	-5	55	25	3	5	21	168
M2511		275	230	166	140	M130x2	117.5	36	89	134.6	148	362	178		232	215	296	18	-5	38	15	3	6	27	184.5