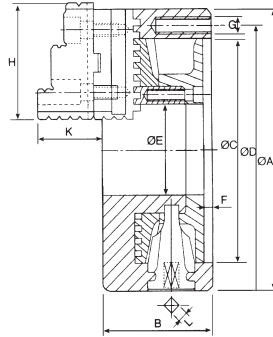
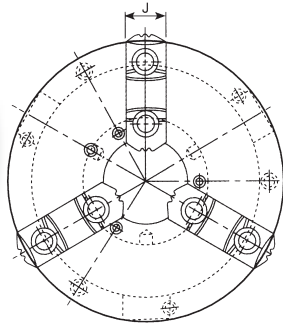




3-Jaw Powerful Scroll Chuck



- 1.VSK types chucks have wider utilization range; hard jaws suitable for heavy cutting; soft jaws suitable for light and precision cutting.
- 2.Hard jaws could be used as internal jaws and external jaws.
- 3.Gripping accuracy of 0.03mm (0.012inch) T.I.R.
- 4.The body is made of MEEHANITE. It is suitably used for high speed revolution and 3 times more durable than regular chucks.

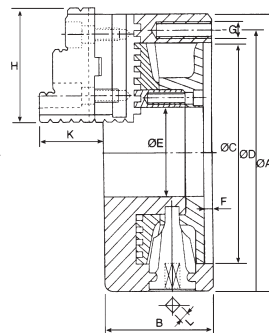
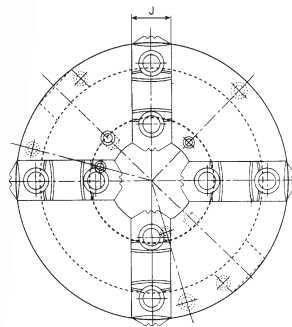
SPECIFICATIONS

Unit:mm

ORDER NO.	Dim											Allowable Handle Torque (kgf.m)	Gripping Force (kgf)	I (kgf.m ²)	Weight (kg)	Max. Speed (r.p.m.)	Gripping Range		CODE NO.
	A	B	C	D	E	F	G	H	J	K	L						O.D.range	I.D.Range	
VSK-6	165	67	130	147	45	5	3-M10	72	26	39	10	9.0	3300	0.03	9	4000	Ø8- Ø160	Ø55- Ø150	5002-030
VSK-7	192	76.5	155	172	58	5	3-M10	82	28	43	11	11.0	3600	0.06	13.8	3500	Ø8- Ø180	Ø62- Ø170	5002-031
VSK-8	200	76.5	160	176	58	5	3-M10	82	28	43	11	11.0	3600	0.07	15.5	3200	Ø8- Ø180	Ø62- Ø170	5002-032
VSK-9	232	84	190	210	70	6	3-M12	96	32	50	12	15.0	3900	0.16	22	2900	Ø11-Ø220	Ø70- Ø210	5002-033
VSK-10	273	87	230	250	87	8.5	3-M12	100	35	50	12	19.5	4800	0.26	29.7	2500	Ø12-Ø260	Ø80- Ø250	5002-034
VSK-12	310	96	260	285	105	7	3-M12	114	40	56	14	21.0	5700	0.58	43.5	2200	Ø15-Ø300	Ø90- Ø290	5002-035
VSK-15	381	110.5	310	342	128	9.5	6-M14	135	50	67.5	15	23.0	4000	1.1	69	1500	Ø25-Ø320	Ø110-Ø310	5002-036
VSK-16	405	122	345	375	145	8.5	6-M14	150	50	75	15	23.0	4500	1.72	98	1500	Ø30-Ø400	Ø110-Ø380	5002-037



4-Jaw Powerful Scroll Chuck



1. Hard jaws are adopted for square for square or octagonal thin tube workpieces machining.
- 2.Soft jaws could grip rectangular workpiece after being unisotropic machined.
- 3.The specification is the same as SK type.
- 4.The body is made of MEEHANITE. It is suitably used for high speed revolution and 3 times more durable than regular chucks.

REVERSIBLE TOP JAWS TYPE

SPECIFICATIONS

Unit:mm

ORDER NO.	Dim											Allowable Handle Torque (kgf.m)	Gripping Force (kgf)	I (kgf.m ²)	Weight (kg)	Max. Speed (r.p.m.)	Gripping Range		CODE NO.
	A	B	C	D	E	F	G	H	J	K	L						O.D.range	I.D.Range	
VPSK-7	192	76.5	155	172	58	5	3-M10	82	28	43	11	11.0	3600	0.06	14.1	3500	Ø8- Ø180	Ø62- Ø170	5002-210
VPSK-9	232	84	190	210	70	6	3-M12	96	32	50	12	15.0	3900	0.16	22.2	2900	Ø11-Ø220	Ø70- Ø210	5002-211
VPSK-12	310	96	260	285	105	7	3-M12	114	40	56	14	21.0	5700	0.58	45	2200	Ø15-Ø300	Ø90- Ø290	5002-212
VPSK-16	405	122	345	375	145	8.5	6-M14	150	50	75	15	23.0	4500	1.72	108	1500	Ø30-Ø400	Ø110-Ø380	5002-213