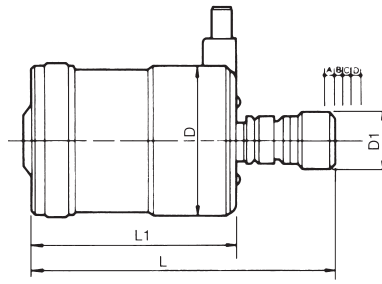




Reversible Tapping Attachments



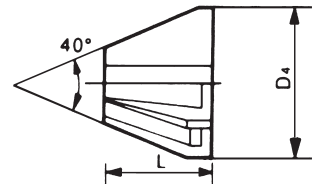
- Radial Float is SELF-CENTERING to compensate for hole center misalignment.
- Unique Double Spring Mechanism produces Automatic Feed and Cushion Drive. There are two springs for the feed and two springs for the reversal. Each set gives you double smoothness for ULTRA accurate tapping applications (not possible with this type of tapping head in the past).
- Pre-set Torque Control Permits easy operation of tap brake torque control
- JACOBS RUBBER FLEX COLLETS are standard accessory.

Reversing Type

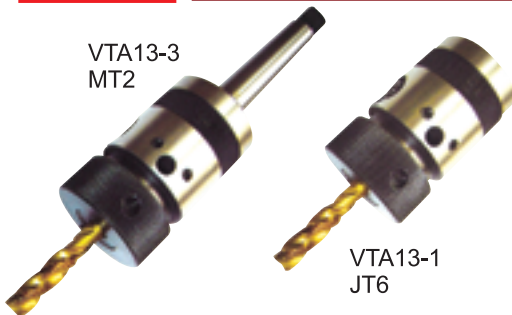
ATTACHMENT DESIGNATIONS ORDER NO.	FOR TAPS	SUITABLE ADAPTERS SIZE	REC. MAX SPEED	LENGTH COMPENSATION				D DIA	D1 DIA	L	L1	WEIGHT (kg)	CODE NO.
				R.H. ROTATION COMP A	NON ROTAT EXP. B	LH. ROTAT. EXP. C	LH. ROTAT. EXP. E						
VTA7-JT6	M2-M7	FC-10/FC-11	1500RPM	5	3.5	1.5	7.0	52	23	125.5	94.5	1.2	3404-020
VTA12-JT6	M3-M12	FC-20/FC-21	1000RPM	5	4.5	1.5	8.5	73.5	28	169	122	3	3404-021
VTA20-M20	M8-M20	FC-30/FC-31	600RPM	5.5	5	2.0	9.0	91	38	190	128	5.6	3404-022

Rubber Flex Collet For VTA Tapper

ADAPTER DESIGNATIONS	COLLETS CAPACITY	D4	L	CODE NO.
FC-10	Ø 2.5- Ø 4.5	16	11	3404-030
FC-11	Ø 4.5- Ø 6.5	16	11	3404-031
FC-20	Ø 4.5- Ø 7.5	21.5	13	3404-032
FC-21	Ø 7.5- Ø 10	21.5	13	3404-033
FC-30	Ø 8.0- Ø 16	26.5	15	3404-034
FC-31	Ø 14- Ø 19	26.5	15	3404-035



Tap Chuck Series



1. THE DESIGN CAN PREVENT THE TAPS CHUCK FROM LOOSENING AFTER TAPPING.
2. SUIT FOR VARIOUS TAPS. LARGE TAPPING CAPACITY. HIGH POWER TORSIONAL.

OPTIONAL:

TAP CHUCK WRENCH



ORDER NO.	CONNECTING TAPER	TAPPING CAPABILITY	CODE NO.
VTA13-1	JT6	Ø2 - 13MM Ø1/8" - Ø1/2"	3404-006
VTA13-2	B16		3404-007
VTA13-3	MT2		3404-008
VTA13-4	MT3		3404-009
VTA16-1	JT3	Ø3 - 16MM Ø1/8" - Ø5/8"	3404-016
VTA16-2	B18		3404-017
VTA16-3	MT2		3404-018
VTA16-4	MT3		3404-019
VTA24-1	MT3	Ø12 - 24MM Ø1/2" - Ø15/16"	3404-023
VTA24-2	MT4		3404-024



Tap Chuck

1. It's suitable for various taps, so it is much more economic and efficient than other brands of taps chuck.
2. The design can prevent the taps chuck from loosening after tapping.

Unit:mm



ORDER NO.	SIZE	TAPPING CAPACITY		Taper Mount NO. DIN or Jacobs	Length (m/m)	Outer Dia. (m/m)	Weight (g)	CODE NO.
		mm	inch					
35000	1/2	M4-M12	1/8-1/2	JT6	75	42	585	3404-056
35002	1/2	M4-M12	1/8-1/2	B16	75	42	585	3404-057
35004	3/8	M4-M12	1/8-1/2	JT2	75	42	590	3404-058
35006	5/8	M9-M18	3/8-3/4	JT6		50		3404-059