



High Speed Chuck

UC COLLET CHUCK

For clamping HSC(High speed cutting) tools on machining centers.

Maximum speed:15,000 R.P.M

High accuracy:0.005mm T.I.R

Features

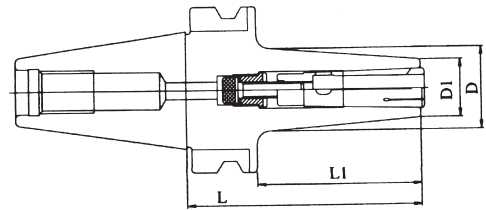
Taper of UC spring collet is 1/120, self-locked function makes high gripping power to prevent slip-out of the cutting tools.

UC spring collet chucks are made by high alloy steel and case hardened up to HRC59° and ground to ultra precision.

UC spring collets are slitted with a patented slotted-design for increasing gripping power and accuracy. (PAT.103654)

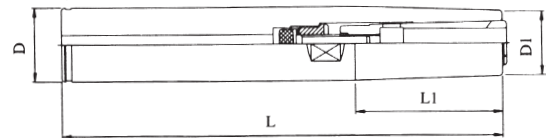


UC



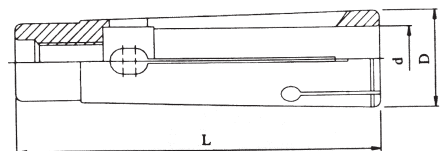
ORDER NO.	L	L1	D	D1	Collets	WEIGHT (kg)	CODE NO.
BT30-UC10-70	70	48	30	22	UC10	0.8	3218-001
BT40-UC10-90	90	63	32	22	UC10	1.4	3218-002
BT40-UC16-90	90	63	40	30	UC16	1.5	3218-003
BT50-UC10-110	110	72	36	22	UC10	4.9	3218-004
BT50-UC16-120	120	82	42	30	UC16	5	3218-005

STRAIGHT SHANK UC CHUCK



ORDER NO.	L	L1	D	D1	Collets	WEIGHT (kg)	CODE NO.
C25-UC10-150	150	50	25	22	UC10	0.5	3218-030
C25-UC10-200	200	50	25	22	UC10	0.7	3218-031

UC SPRING COLLETS



ORDER NO.	d	D	L	WEIGHT (kg)	CODE.NO.
UC10-6	6	15	56.5	0.054	3218-060
UC10-8	8			0.047	3218-061
UC10-10	10			0.039	3218-062

ORDER NO.	d	D	L	WEIGHT (kg)	CODE NO.
UC16-10	10	21	67	0.104	3218-090
UC16-12	12			0.104	3218-091
UC16-14	14			0.069	3218-092
UC16-16	16			0.089	3218-093