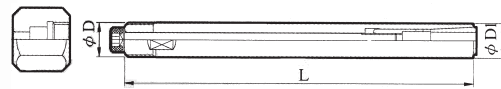


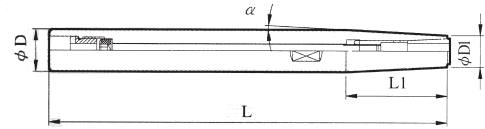


# Cylindrical Shank Of DC Slim Chuck

DC Collet System



- 1.Runout:below 0.005mm.(length 4D)
- 2.Smallest outside diameter in the wourd:Ø12(Collet inside diameter  $\phi 1.75 \sim \phi 6$ )
- 3.Using anti-vibration material, surface hardness HRC 65°



ORDER NO.	Fig	L	L1	D	D1	$\alpha$	WEIGHT(kg)	CODE NO.
ST12-DC6-120	1	120	—	12	12	—	0.15	3218-048
ST16-DC6-150	2	150	38	16	12	3°	0.3	3218-049
ST20-DC6-200	2	200	76	20	12	3°	0.6	3218-050
ST25-DC6-250	2	250	124	25	12	3°	0.8	3218-051



# Set Of DC Collets And Collet Chuck

DC Collet System

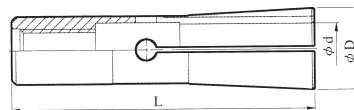


ORDER NO.	Cellet Chuck	Collets	Spanner	Weight(kg)	CODE NO.
SST12-DC6-120E	ST12-DC6-120	EACH SET	30109-205	0.7	3218-052
SST16-DC6-150E	ST16-DC6-150	DC6-3E × 1pc	30109-205	0.7	3218-053
SST20-DC6-200E	ST20-DC6-200	DC6-4E × 1pc	30109-205	1	3218-054
SST25-DC6-250E	ST25-DC6-250	DC6-6E × 1pc	30109-205	1.3	3218-055



# Small Collet Of Slim Collet Chuck

DC Collet System



- 1.Below  $\phi 6$  can clamp any shank.
- 2.DC6 series : for clamping drills, reamers and taps.
- 3.DC6-E series:for clamping end mills.
- 4.Runout : below 0.005mm. (length 4D)

ORDER NO.	Range(d)	WEIGHT (kg)	CODE NO.
DC6-2	1.75-2.00	0.05	3218-056
DC6-2.25	2.00-2.25	0.05	3218-057
DC6-2.5	2.25-2.50	0.05	3218-058
DC6-2.75	2.50-2.75	0.05	3218-059
DC6-3	2.75-3.00	0.05	3218-065
DC6-3.25	3.00-3.25	0.05	3218-066
DC6-3.5	3.25-3.50	0.05	3218-067
DC6-3.75	3.50-3.75	0.05	3218-068
DC6-4	3.75-4.00	0.05	3218-069

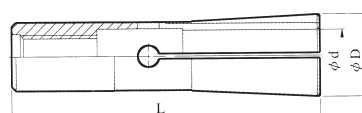
L	D	d
36	9.8	$\phi 2 \sim \phi 6$

ORDER NO.	Range(d)	WEIGHT(kg)	CODE NO.
DC6-4.25	4.00-4.25	0.05	3218-070
DC6-4.5	4.25-4.50	0.05	3218-071
DC6-4.75	4.50-4.75	0.05	3218-072
DC6-5	4.75-5.00	0.05	3218-073
DC6-5.25	5.00-5.25	0.05	3218-074
DC6-5.5	5.25-5.50	0.05	3218-075
DC6-5.75	5.50-5.75	0.05	3218-076
DC6-6	5.75-6.00	0.05	3218-077



# For End Mill Shank

DC Collet System



ORDER NO.	D	WEIGHT (kg)	CODE NO.
DC6-3E	3	0.05	3218-078
DC6-4E	4	0.05	3218-079
DC6-5E	5	0.05	3218-080
DC6-6E	6	0.05	3218-081

L	D	d
36	9.6	$\phi 3 \sim \phi 6$