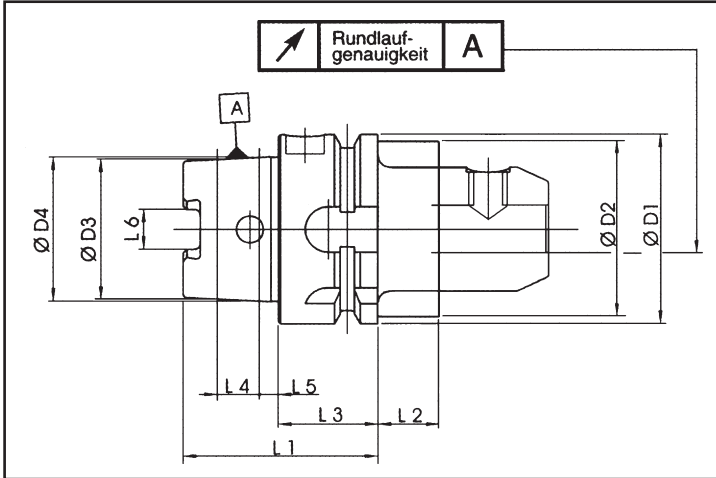




HSK-A63(DIN-69893) Tool Holder

Form A



DIN 69893

SIZE	ØD1	ØD2	ØD3	ØD4	L1	L2	L3	L4	L5	L6
HSK 63	63	53	46.53	48	58	16	26	14.7	6.3	12.54

Compared to the steep taper the HSK has the following advantages

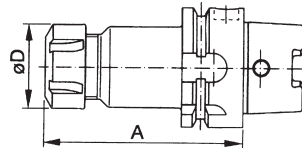
- high repetition accuracy when clamping tools into spindle
- fix axial positioning by flat contact surface
- suitable for high speed cutting
- no pull stud necessary

Material

- special case-hardening steel for highly stressed parts
- surface hardness 58-2 HRC

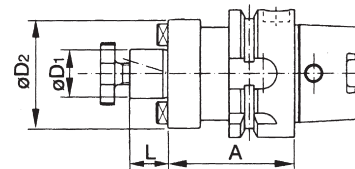
Tensile strength in core min. 1000 N/mm²

Collet chuck ER

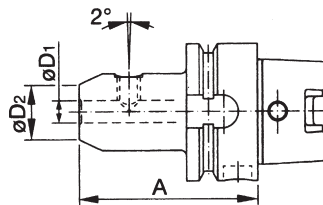


ORDER NO.	A	D ₂	WEIGHT (kg)	CODE NO.
A 63.020.ER16	100	28	1	3217-001
A 63.020.ER25	100	42	1.2	3217-002
A 63.020.ER32	100	50	1.4	3217-003
A 63.020.ER40	120	63	1.5	3217-004
A 63.022.ER16	160	28	1.7	3217-005
A 63.022.ER25	160	42	1.9	3217-006
A 63.022.ER32	160	50	2.1	3217-007
A 63.022.ER40	160	63	2.3	3217-008

Adapter for inserted tool milling cutter



Weldon toolholder



ORDER NO.	A	D ₂	WEIGHT (kg)	CODE NO.
A 63.030.SL6	80	25	1	3217-060
A 63.030.SL8	80	28	1.1	3217-061
A 63.030.SL10	80	35	1.1	3217-062
A 63.030.SL12	90	42	2	3217-063
A 63.030.SL14	90	44	2	3217-064
A 63.030.SL16	100	48	2	3217-065
A 63.030.SL18	100	50	2.1	3217-066
A 63.030.SL20	100	52	2.1	3217-067
A 63.030.SL25	110	65	2.6	3217-068
A 63.030.SL32	110	72	2.8	3217-069

ORDER NO.	A	D ₂	WEIGHT (kg)	CODE NO.
A 63.051.FMC22	100	50	1.3	3219-030
A 63.051.FMC27	100	60	1.5	3219-031
A 63.051.FMC32	100	78	1.6	3219-032
A 63.051.FMC40	100	87	2	3219-033
A 63.052.FMC22	160	50	1.5	3219-034
A 63.052.FMC27	160	60	1.7	3219-035
A 63.052.FMC32	160	78	1.8	3219-036
A 63.052.FMC40	160	87	2.2	3219-037

ACCURACY

CONCENTRIC $\leq 3\mu\text{m}(A < 160\text{mm})$

$\leq 4\mu\text{m}(A \geq 160\text{mm})$

HARDNESS HRC 56 ~ 58

TOOL DYNAMATIC BALANENCE TEST.