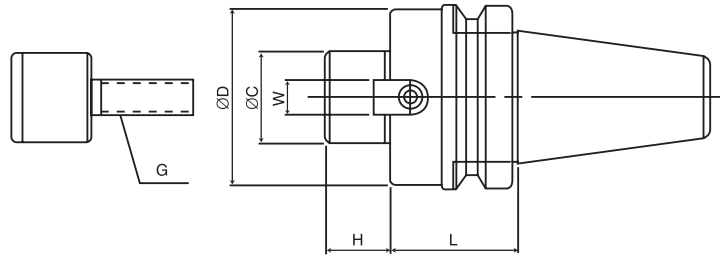




Face Mill Arbor

BT-SHANK MAS 403

BT30,40,50

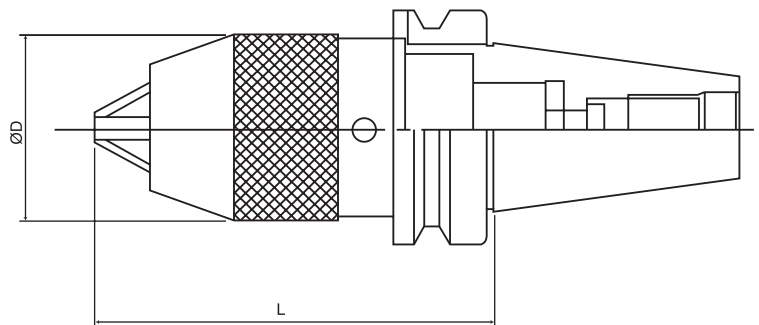


METRIC FMC TYPE

ORDER NO.	SIZE	øC	øD	L	H	W	G	WEIGHT (kg)	CODE NO.
BT-168	BT30-FMC22-45	22	48	45	18	10	M10x1.5P	0.85	3212-285
BT-169	BT40-FMC22-45	22	48	45	18	10	M10x1.5P	1.45	3212-286
BT-170	BT40-FMC22-90	22	48	90	18	10	M10x1.5P	2.20	3212-287
BT-171	BT40-FMC27-45	27	60	45	20	12	M12x1.75P	1.60	3212-288
BT-172	BT40-FMC27-90	27	60	90	20	12	M12x1.75P	2.30	3212-289
BT-173	BT40-FMC32-45	32	62	45	22	14	M16x2.0P	1.75	3212-290
BT-174	BT50-FMC22-45	22	60	45	18	10	M10x1.5P	4.50	3212-291
BT-175	BT50-FMC22-105	22	48	105	18	10	M10x1.5P	6.4	3212-292
BT-176	BT50-FMC22-150	22	48	150	18	10	M10x1.5P	6.8	3212-293
BT-177	BT50-FMC27-45	27	70	45	20	12	M12x1.75P	4.6	3212-294
BT-178	BT50-FMC27-105	27	60	105	20	12	M12x1.75P	6.7	3212-295
BT-179	BT50-FMC27-150	27	60	150	20	12	M12x1.75P	7.5	3212-296
BT-180A	BT50-FMC32-45	32	75	45	22	14	M16x2.0P	5.7	3212-297
BT-181A	BT50-FMC32-105	32	80	105	22	14	M16x2.0P	6.8	3212-298



Drill Chuck Holder/APU



ORDER NO.	TAPER	øD	L	KGS	CODE NO.
BT-180	BT30-APU08-80	37	80	0.8	3212-301
BT-181	BT30-APU13-100	50	100	1	3212-302
BT-182	BT40-APU08-85	37	85	1.3	3212-303
BT-183	BT40-APU13-110	50	110	1.7	3212-304
BT-184	BT40-APU16-120	58	120	2.1	3212-305
BT-185	BT50-APU08-95	37	95	4	3212-306
BT-186	BT50-APU13-120	50	120	4.3	3212-307
BT-187	BT50-APU13-180	50	180	5.6	3212-308
BT-188	BT50-APU16-120	58	120	4.5	3212-309