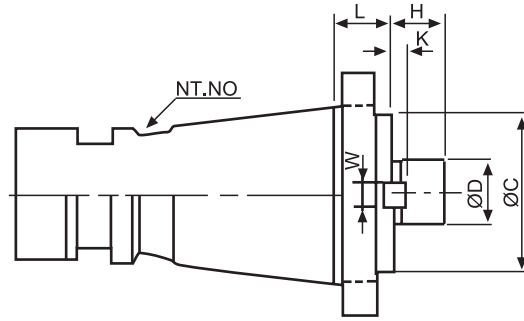




# Face Mill Arbor

DIN 2080/ISO SHANK

NT30, 40, 50, R8, MT3, 4



**MATERIAL:SCM-21 HARDNESS:HRC 50°-55°**

Squareness of mounting surface:Less than 0.0002"(0.005M/M)

Deflection in shaft and taper:Less than 0.0002"(0.005M/M)



NT40 WITH MAHO GAP



NT30

## INCH FMA TYPE

ORDER NO.	TAPER	SHAFT SIZE				MOUNTING SIZE		WINGHT (kg)	CODE NO.
		D	H	W	K	C	L		
VF-101	NT30	25.4	20	9.57	5	65	20	0.72	3212-001
VF-102	NT30	31.75	23	12.75	7	73	20	0.75	3212-002
VF-103	NT30	38.1	22	15.90	9	82	20	2.10	3212-003
VF-104	NT40	25.4	20	9.57	5	65	20	1.45	3212-004
VF-105	NT40	31.75	22	12.75	7	73	20	1.75	3212-005
VF-106	NT40	38.1	23	15.90	9	82	20	2	3212-006
VF-109	NT50	25.4	20	9.57	5	65	20	3.3	3212-009
VF-110	NT50	31.75	22	12.75	7	73	20	3.4	3212-010
VF-111	NT50	38.1	23	15.90	9	82	20	3.6	3212-011
VF-112	NT50	50.8	24	19.05	10	95	20	3.9	3212-012
VF-114	R8	25.4	20	9.57	5	40	20	0.8	3212-014
VF-115	R8	31.75	22	12.75	7	53	20	1	3212-015
VF-116	MT-3	25.4	20	9.57	5	40	20		3212-016
VF-117	MT-4	25.4	20	9.57	5	40	20		3212-017

## METRIC FMB TYPE

ORDER NO.	TAPER	SHAFT SIZE				MOUNTING SIZE		WINGHT (kg)	CODE NO.
		D	H	W	K	C	L		
VF-120	NT30	22	18	9.57	5	40	20	0.6	3212-100
VF-121	NT30	27	20	12.75	7	53	20	0.7	3212-101
VF-122	NT30	32	23	15.90	7	63	20	0.9	3212-102
VF-123	NT40	22	18	9.57	5	40	20	1.2	3212-103
VF-124	NT40	27	20	12.75	7	53	20	1.35	3212-104
VF-125	NT40	32	23	15.90	7	63	20	1.41	3212-105
VF-126	NT40	40	26	19.05	8	85	20	1.82	3212-106
VF-127	NT40	60	32	25.40	5	128	24	3.8	3212-107
VF-128	NT50	22	18	9.57	5	40	20	3.2	3212-108
VF-129	NT50	27	20	12.75	7	53	20	3.3	3212-109
VF-130	NT50	32	23	15.90	7	63	20	3	3212-110
VF-131	NT50	40	26	19.05	8	85	20	3.6	3212-111
VF-132	NT50	60	32	25.40	5	128.57	24	5.5	3212-112
VF-134	R8	22	18	9.57	5	40	20	0.9	3212-113
VF-135	R8	27	20	12.75	7	53	20	0.95	3212-114
VF-136	MT-3	27	20	9.57	7	53	20	0.6	3212-115
VF-137	MT-4	27	20	9.57	7	53	20	1	3212-116

