

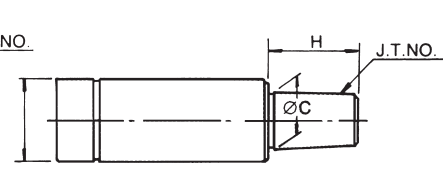
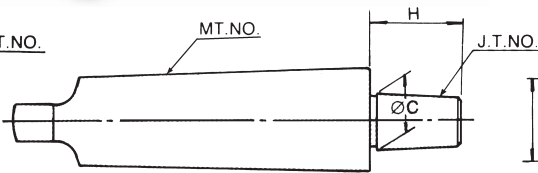
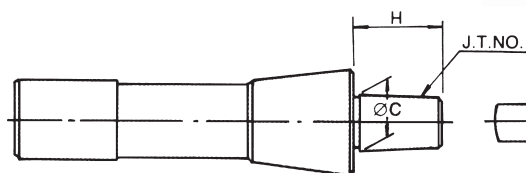


# Drill Chucks Arbor

R8

MT3.4.5

C20.25.32



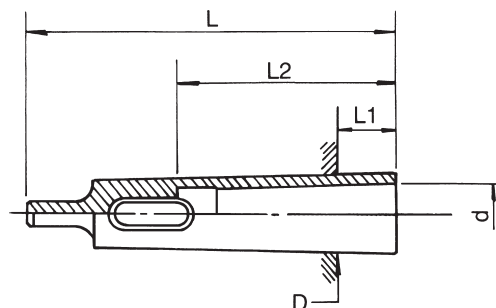
ORDER NO.	TAPER	JT NO.	C	H	WEIGHT (kg)	CODE NO.
VJ-121	R8	JT1	9.754	18	0.4	3209-001
VJ-122		JT2	13.94	20	0.43	3209-002
VJ-123		JT6	17.17	26	0.48	3209-003
VJ-124		B16	15.733	24	0.42	3209-004

ORDER NO.	TAPER	JT NO.	C	H	WEIGHT (kg)	CODE NO.
VJ-131	MT3	JT6	17.17	26	0.32	3209-030
VJ-132	MT4	JT6	17.17	26	0.6	3209-031
VJ-133	MT5	JT6	17.17	26	1.5	3209-032
VJ-134	MT3	B16	15.733	24	0.3	3209-033

ORDER NO.	TAPER	JT NO.	C	H	WEIGHT (kg)	CODE NO.
VJ-141	C20	JT6	17.17	26	0.2	3209-060
VJ-142	C25	JT6	17.17	26	0.3	3209-061
VJ-143	C32	JT6	17.17	26	0.5	3209-062



# Morse Taper Sleeve

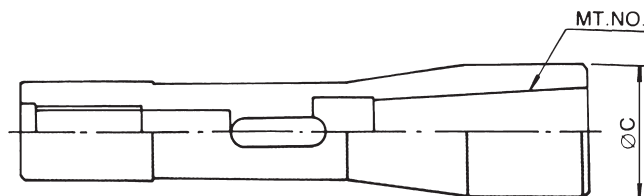


ORDER NO.	I.D.xO.D.	D	d	L	I1	I2	WEIGHT (kg)	CODE NO.
VQ-101	MT2xMT3	23.825	17.780	112	18	67	0.2	3210-001
VQ-102	MT2xMT4	31.267	17.780	124	6.5	67	0.45	3210-002
VQ-103	MT2xMT5	44.399	17.780	156	6.5	67	1.3	3210-003
VQ-105	MT3xMT4	31.267	23.825	140	22.5	84	0.4	3210-005

ORDER NO.	I.D.xO.D.	D	d	L	I1	I2	WEIGHT (kg)	CODE NO.
VQ-106	MT3xMT5	44.399	23.825	156	6.5	84	1.15	3210-006
VQ-107	MT3xMT6	63.348	23.825	218	8	84	4	3210-007
VQ-108	MT4xMT5	44.399	31.627	171	21.5	107	1	3210-008
VQ-109	MT4xMT6	63.348	31.627	218	8	107	3.6	3210-009
VQ-110	MT5xMT6	63.348	44.399	218	8	133	2.8	3210-010



# R8 With Morse Taper Sleeve



ORDER NO.	SHANK	SIZE	MT NO.	WEIGHT (kg)	CODE NO.
VQ-122	R8	R8-MT2	MT2	0.3	3211-001
VQ-123	R8	R8-MT3	MT3	0.4	3211-002