



Posi-lock Milling Collet Chuck

COLLET HOLDER WITH MT, R-8, NT TAPER SHANK
 POSI-LOCK COLLET TYPE



ORDER NO.	TAPER	WEIGHT KGS	DRAW BAR		CODE NO.
VC-115	MT2	0.7	1.M10x1.5	2.3/8"-16	3203-001
VC-116	MT3	0.9	1.M12x1.75	2.M10X1.5 3.3/8"-16	3203-002
VC-117	MT4	1	1.M16X2.0P	2.5/8"-11	3203-003
VC-118	R8	1	1.7/16"-20UNF		3203-004
VC-123	NT30	1	1.M12X1.75	2.1/2"-12	3203-005
VC-124	NT40	1.2	1.M16X2.0	2.5/8"-11	3203-006
VC-125	NT50	3	1.M24X3.0	2.1"-8	3203-007

POSI-LOCK MILLING COLLET CHUCK KIT

Including Collet Chuck, Full Set of Collets and Wrench
 Compact design for maximum clearance. Gradual collier taper for powerful clamping action over entire collet. Fast & simple tool changing.

ORDER NO.	TAPER	DRAW BAR	COLLET SIZE	COLLET PCS	WEIGHT KGS	CODE NO.
VC-101	MT2	1.M10x1.5P 2.3/8"-16	METRIC	4	1.8	3203-101
VC-101I			INCH	4	1.8	3203-102
VC-101A			MM+INCH	8	2.3	3203-103
VC-102	MT3	1.M10x1.5P 2.M12X1.75 3.3/8"-16 4.1/2"-12	METRIC	4	2	3203-104
VC-102I			INCH	4	2	3203-105
VC-102A			MM+INCH	8	5	3203-106
VC-103	MT4	1.M16x2.0P 2.5/8"-11	METRIC	4	2	3203-107
VC-103I			INCH	4	2	3203-108
VC-103A			MM+INCH	8	2.5	3203-109
VC-104	R8	1.7/16"-20UNF	METRIC	4	2.2	3203-110
VC-104I			INCH	4	2	3203-111
VC-104A			MM+INCH	8	2.5	3203-112
VC-105	NT30	1.M12x1.75P 2.1/2"-12	METRIC	4	2	3203-113
VC-105I			INCH	4	2	3203-114
VC-105A			MM+INCH	8	2.5	3203-115
VC-106	NT40	1.M16x2.0P 2.5/8"-11	METRIC	4	2.3	3203-116
VC-106I			INCH	4	2.3	3203-117
VC-106A			MM+INCH	8	2.8	3203-118
VC-107	NT50	1.M24x3.0P 2.1"-8	METRIC	4	4.3	3203-119
VC-107I			INCH	4	4.3	3203-120
VC-107A			MM+INCH	8	4.8	3203-121

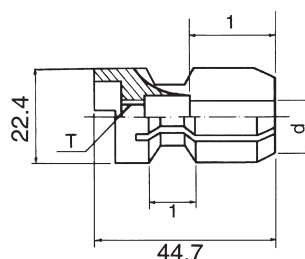


EACH COLLET WEIGHT IS 0.09kgs

ORDER NO.	SIZE	CODE NO.
PLI- 1/4	1/4"	3203-130
PLI- 3/8	3/8"	3203-131
PLI- 1/2	1/2"	3203-132
PLI- 5/8	5/8"	3203-133
PLM- 6	6mm	3203-134
PLM- 10	10mm	3203-135
PLM- 12	12mm	3203-136
PLM- 16	16mm	3203-137

COLLET SET RANGE SIZE
METRIC 4PCS:6,10,12,16mm
INCH 4PCS:1/4",3/8",1/2",5/8"
SIZE 8PCS:6,10,12,16mm,1/4",3/8",1/2",5/8"

COLLET SIZE FOR POSI-LOCK



INDIVIDUAL UNIT

ORDER NO.	Q'TY	T	d COLLET SIZE
PLI-□	1PC	5/8"-20TPI	∅ 1/4",3/8",1/2",5/8"
PLM-□	1PC	M16-1.25P	∅ 6,10,12,16mm

FULL SET

ORDER NO.	COLLET SIZE	WEIGHT (kg)	CODE NO.
VC-111	4pcs - 6,10,12,16mm	0.36	3203-200
VC-112	4pcs - 1/4",3/8",1/2",5/8"	0.36	3203-201
VC-113	8pcs - 6,10,12,16mm,1/4",3/8",1/2",5/8"	0.72	3203-202