



# Clamping Nuts & Wrench For Collets

DIN 6499

## ER CLAMPING NUT SYSTEM

### CLAMPING NUTS



ORDER NO.	Fig.	COLLET TYPE	D	H	G	WEIGHT (KG)	CODE NO.
V-800	3	ER11UM	19	13	M14X0.75P	0.01	3015-001
V-801	3	ER16UM	28	18	M22X1.5P	0.035	3015-002
V-802	3	ER20UM	34	21	M25X1.5P	0.06	3015-003
V-803	4	ER25UM	42	20	M32X1.5P	0.095	3015-004
V-804	4	ER32UM	50	23	M40X1.5P	0.15	3015-005
V-805	4	ER40UM	63	25	M50X1.5P	0.31	3015-006
V-806	4	ER50UM	78	35	M64X2.0P	0.58	3015-007
V-807	1	ER11MS	16	12	M13X0.75P	0.01	3015-008
V-808	2	ER16M	22	18	M19X1.0P	0.035	3015-009
V-809	2	ER20M	28	19	M24X1.0P	0.06	3015-010
V-810A	5	ER40KM	63	29	M50X1.5P	0.31	3015-011
V-810B	5	ER50KM	78	40	M64X2.0P	0.58	3015-012
V-810C	2	ER-11M	16	12	M13X0.75P	0.01	3015-013
V810D		ER-8M	12	10.8	M10X0.75P	0.01	3015-014

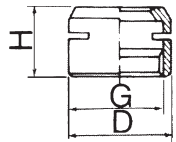


Fig.1 ER11MS

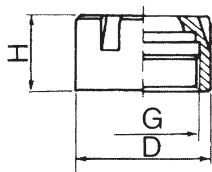


Fig.2 ER11,16,20M

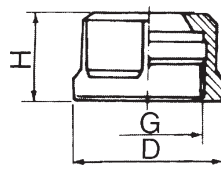


Fig.3 ER11,16,20UM

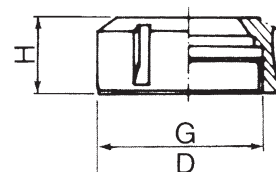


Fig.4 ER25,32,40,50UM

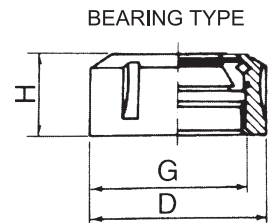


Fig.5 ER40,50KM

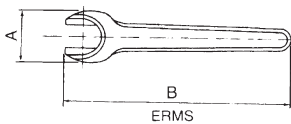
## ER WRENCHS SYSTEM DIN 6499



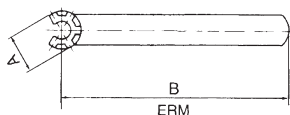
ERMS



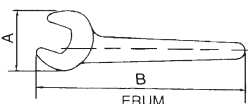
ERUM



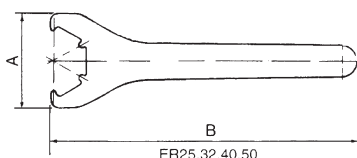
ERMS



ERM



ERUM



ER25,32,40,50



ERM



ER25,32,40,50

ORDER NO.	TYPE	A	L	KGS	CODE NO.
V-821	ER11MS	22	100	0.05	3015-101
V-822	ER11M	17	95	0.05	3015-102
V-823	ER16M	22.5	118	0.06	3015-103
V-815	ER16UM	44	140	0.08	3015-104
V-824	ER20M	28	130	0.08	3015-105
V-816	ER20UM	53	170	0.1	3015-106
V-811	ER25 UM	65	210	0.2	3015-107
V-812	ER32UM	75	250	0.4	3015-108
V-813	ER40UM	90	290	0.5	3015-109
V-814	ER50	110	350	0.9	3015-110