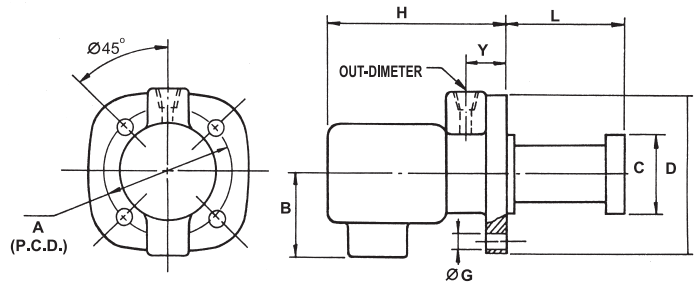




# 1/8 HP. Under Water Coolant Pump

## FEATURES

This is the pump in best quality with anti-rust treatment, use high grade material for the complete set and has been duly instected in five steps by precision electron device.

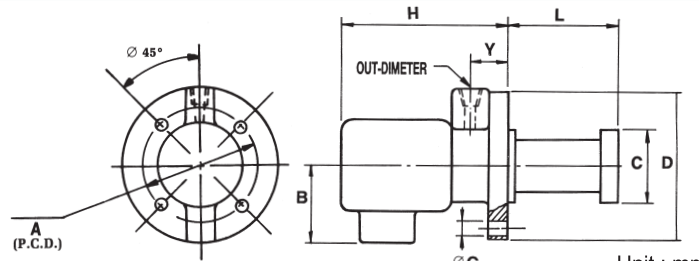


POWER	A	B	C	D	G	H	Y	OUT-DIMETER
1/8HP	128±0.2	105	∅92	∅155	∅8	160	19	PT 3/8

ORDER NO.	TYPE	POWER	Lm/m	PUMPING WATER		WEIGHT (kg)	CODE NO.
				1 m/min	2 m/min		
VWP-0810	UNDER WATER	1/8HP	100	27ℓ-28ℓ	25ℓ-26ℓ	5	1026-001
VWP-0813			130			5.4	1026-002
VWP-0815			150			5.7	1026-003
VWP-0818			180			5.7	1026-004



# 1/4 HP. Under Water Coolant Pump

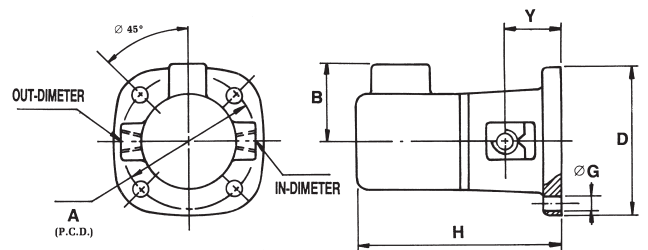


POWER	A	B	C	D	G	H	Y	OUT-DIMETER
1/4HP	158±0.2	125	∅122	∅180	∅8	180	26	PT 1/2

ORDER NO.	TYPE	POWER	Lm/m	PUMPING WATER		WEIGHT (kg)	CODE NO.
				1 m/min	2 m/min		
VWP-0415	UNDER WATER	1/4HP	160	74ℓ-76ℓ	71ℓ-72ℓ	11	1026-010
VWP-0418			180			11	1026-011
VWP-0420			200			11	1026-012
VWP-0424			240			12.5	1026-013
VWP-0427			270			13	1026-014



# Self Priming Coolant Pump 1/8 HP. 1/4 HP



POWER	A	B	D	G	H	Y	IN-DIMETER	OUT-DIMETER
1/8 HP	140±0.2	105	165	∅8	195	50±0.5	PT 3/8	PT 3/8
1/4 HP	185±0.2	125	225	∅8	240	65±0.5	PT 1/2	PT 1/2

ORDER NO.	TYPE	POWER	PUMPING WATER		WEIGHT (kg)	CODE NO.
			1 m/min	2 m/min		
VWP-089	SELF PRIMING	1/8HP	26ℓ-27ℓ	24ℓ-25ℓ	6	1026-020
VWP-049		1/4HP	73ℓ-75ℓ	70ℓ-71ℓ	11	1026-021