



Water-Proof Halogen Lighting Lamp



400 SERIES

VHL-400L

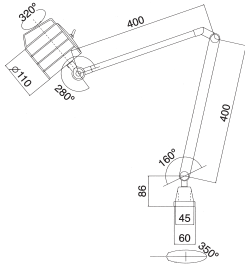


500 SERIES

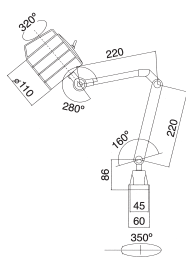
VHL-500S



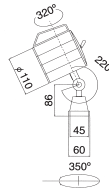
VHL-500L



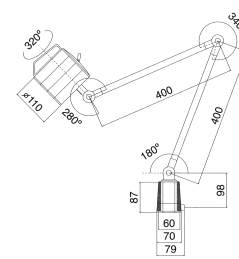
VHL-400L



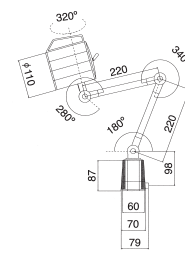
VHL-400M



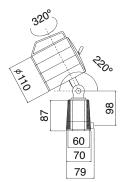
VHL-400S



VHL-500L

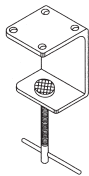


VHL-500M

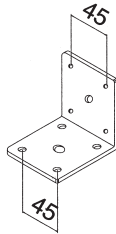


VHL-500S

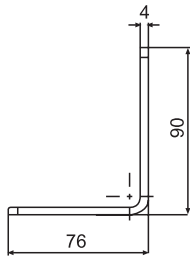
OPTIONAL



V-20



V-21



V-26

WATER-PROOF HALOGEN LIGHTING LAMP (VHL-400L SERIES)

LIGHTING HEADS OF THESE SERIES WITH SPECIFIC FEATURES OF WATER-PROOF, DUST-FREE, ANTI-LUBRICAT, ANIT-CUTTING OIL, ETC. THE LIGHTING UNITS ADOPTED WITH A BULB (24V/55W). CUSTOMERS' SPECIFICATIONS ALSO ACCEPTED.

ORDER NO.	CODE NO.
V-20	1025-106
V-21	1025-107
V-26	1025-108

ORDER NO.	VOLTS	BULB	ARM LENGTH L x l	OPTIONAL ACCESSORIES	WEIGHT (N.W.)	CODE NO.
VHL-400L	12V 55W - 24V 70W	12V 55W - 24V 70W	400X400	V-20 / V-21	2.45	1025-100
VHL-400M	12V 55W - 24V 70W	12V 55W - 24V 70W	220X220	V-20 / V-21	2.17	1025-101
VHL-400S	12V 55W - 24V 70W	12V 55W - 24V 70W		V-20 / V-21	1.33	1025-102
VHL-500L	12V 55W - 24V 70W	12V 55W - 24V 70W	400X400	V-20 / V-21	2.85	1025-103
VHL-500M	12V 55W - 24V 70W	12V 55W - 24V 70W	220X220	V-20 / V-21	2.33	1025-104
VHL-500S	12V 55W - 24V 70W	12V 55W - 24V 70W		V-20 / V-21	1.44	1025-105

VHL-400L

- Water-proof lighting head with reinforced glass resists big temperature fluctuations of cutting oil.
- 12V/24V Voltage.
- Flexible Arm (round arm), 420x420mm
- With universal Lighting Base.
- Specifications of Bulb: 24V/70W.
- Different conditions demand different lighting bases. Selected rectangular L-type (#V-20) base or C-type (#V-21) base.

VHL-400M

- Performance & features: same as , but with shorter flexible arm at 220x185mm.

VHL-400S

- Specially designed to fit particular locations and spaces, The flexible arm is very short.

VHL-500L

- Performance & features of these series: same as . The main difference is that VHL-500L can be installed with a shorter arm, and connected with AC current below 240V. Please indicate the required voltage when placing the orders to us.
- Specifications of the bulb: 12V/50W

VHL-500M

- Same specifications as VHL-500L, but with shorter flexible arm at 220x220mm.

VHL-500S

- Specially designed to fit particular locations and spaces. The flexible arm is very short.