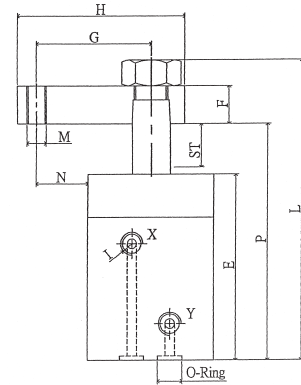
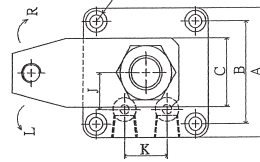




# Swing Clamp Hydraulic Cylinder



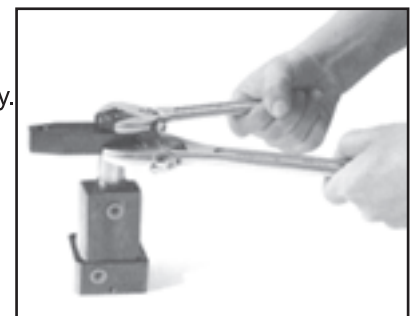
R IS THE CLAMPING PLATE IS TURN RIGHT  
L IS THE CLAMPING PLATE IS TURN LEFT

Order No.	D Bore Size mm	d Piston Rod Size mm	Pressure Area cm <sup>2</sup> 35Kg/cm <sup>2</sup>		Working Pressure	A	B	C	Q	Screw Size	E	F	G
VSH-25R	∅25	∅16	2.89	75	5-50Kg/cm <sup>2</sup>	53	42	28	M5	M5*85L	77	16	48
VSH-25L	∅25	∅16	2.89	75		53	42	28	M5	M5*85L	77	16	48
VSH-32R	∅32	∅18	5.49	144		55	42	28	M6	M6*85L	77	18	53
VSH-32L	∅32	∅18	5.49	144		55	42	28	M6	M6*85L	77	18	53
VSH-40R	∅40	∅22	8.76	230		66	53	32	M6	M6*100L	89	20	59
VSH-40L	∅40	∅22	8.76	230		66	53	32	M6	M6*100L	94	20	59
VSH-50R	∅50	∅28	13.47	354		75	58	38	M8	M8*100L	89	22	64
VSH-50L	∅50	∅28	13.47	354		75	58	38	M8	M8*100L	94	22	64
VSH-63R	∅63	∅35	21.55	565		88	67	48	M10	M10*120L	109	23	72
VSH-63L	∅63	∅35	21.55	565		88	67	48	M10	M10*120L	109	23	72

Order No.	H	I	J	K	(L)	M	N	O-Ring	P	Swing Stroke (mm)	Clamping Stroke (mm)	CODE NO.
VSH-25R	70	1/8PT	15	18	124	M8*1.25	21.5	P7	98	8	10	1003-501
VSH-25L	70	1/8PT	15	18	124	M8*1.25	21.5	P7	98	8	10	1003-502
VSH-32R	75	1/8PT	18	20	127	M8*1.25	25.5	P7	98	8	10	1003-503
VSH-32L	75	1/8PT	18	20	127	M8*1.25	25.5	P7	98	8	10	1003-504
VSH-40R	85	1/8P	22	24	147	M10*1.5	26	P8	114	10	12	1003-505
VSH-40L	85	1/8P	22	24	147	M10*1.5	26	P8	114	10	12	1003-506
VSH-50R	95	1/4PT	27	32	155	M12*1.75	26.5	P8	120	10	12	1003-507
VSH-50L	95	1/4PT	27	32	155	M12*1.75	26.5	P8	120	10	12	1003-508
VSH-63R	110	1/4PT	33	38	176	M14*2	28	P9	139	12	14	1003-509
VSH-63L	110	1/4PT	33	38	176	M14*2	28	P9	139	12	14	1003-510

## SAWING CLAMP HYDRAULIC CYLINDER

1. The clamp plate rotating angle is 90°, You can choice turn right or turn left of rotating direction.
2. The clamping arm will swing around the indicated angle when the piston is traveling down, And then keep straight on until the clamping arm clamps the work-piece tightly.
3. We suggest you to install a flow control valve for protecting cylinder in order to prevent the damage of cylinder barrel and internal components due to fast speed. please don't clamp the work-piece when the cylinder running.
4. This is an exclusive machine with MC clamp that is available for mass-producing spareparts. It is a great helper to raise the production efficiency.
5. Leverage structure designed. To operate on the equipment directly. Clamp easily, perform efficiently



**CLAMPING FORCE: FOR VSH - TYPE IS  $\pi(D^2 - d^2) / 4 \times 35 \text{ kg} / \text{cm}^2 \times 0.75 = \text{__kg}$**

unit:kg

Bore of cylinder(mm)	Piston rod(mm)	Pressure area(cm <sup>2</sup> )	Operation pressure kg/cm <sup>2</sup> to clamping force						
			10	20	30	40	50	60	70
∅25	∅18	2.37	24	47	71	95	119	142	166
∅32	∅20	4.9	49	98	147	196	245	294	343
∅40	∅22.4	8.63	86	173	259	345	432	518	604
∅50	∅28	13.47	135	269	404	539	674	808	943
∅63	∅35	21.55	216	431	647	862	1078	1293	1509