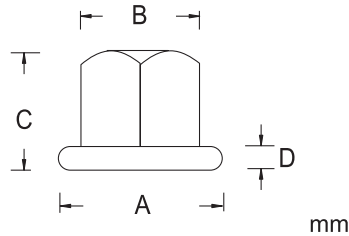


## FLANGE NUT



ORDER NO.	Thread	A	B (M/M)	C	D	Weight (kg)	CODE NO.
4512	M8x1.25	19	13	10	2	0.013	1003-050
4513	M10x1.5	22	17	12	3	0.023	1003-051
4514	M12x1.75	28	21	16	4	0.043	1003-052
4514M	M14x2.0	28	21	16	4	0.047	1003-053
4515	M16x2.0	35	26	17	5	0.087	1003-054
4516	M18x2.5	41	32	25	6	0.10	1003-055
4517	M20x2.5	44	32	35	6	0.092	1003-056
4518	M24x3.0	50	41	32	6		1003-057

## COUPLING NUT



ORDER NO.	Thread	Parallel	Length	Weight	CODE NO.
2612M	M8x1.25	13	22	0.033kg	1003-060
2613M	M10x1.5	17	25	0.035kg	1003-061
2614M	M12x1.75	21	32	0.065kg	1003-062
2614M-1	M14x2.0	21	32	0.06kg	1003-063
2615M	M16x2.0	26	41	0.128kg	1003-064
2616M	M18x2.0	32	48	0.228kg	1003-065
2617M	M20x2.5	32	48	0.208kg	1003-066
2618M	M24x3.0	41	64		1003-067

## Clamping Studs

Heat Treated Steel

Studs

Black Oxide Finished



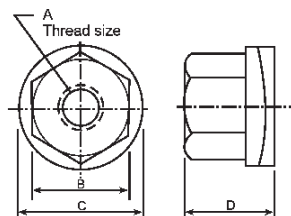
Size	Thread													
	M8x1.25P		M10x1.5P		M12x1.75P		M14x2.0P		M16x2.0P		M18x2.5P		M20x2.5P	
Length mm	ORDER NO. / CODE NO.													
75	1323M 0.02kg	1003-071	1333M 0.01kg	1003-081	1343M 0.01kg	1003-091	1343MA 0.01kg	1003-101	1353M 0.02kg	1003-111	1363M 0.03kg	1003-120	1373M 0.03kg	1003-140
100	1324M 0.03kg	1003-072	1334M 0.01kg	1003-082	1344M 0.02kg	1003-092	1344MA 0.02kg	1003-102	1354M 0.03kg	1003-112	1364M 0.04kg	1003-121	1374M 0.05kg	1003-141
125	1325M 0.03kg	1003-073	1335M 0.01kg	1003-083	1345M 0.02kg	1003-093	1345MA 0.03kg	1003-103	1355M 0.04kg	1003-113	1365M 0.05kg	1003-122	1375M 0.06kg	1003-142
150	1326M 0.04kg	1003-074	1336M 0.01kg	1003-084	1346M 0.02kg	1003-094	1346MA 0.03kg	1003-104	1356M 0.04kg	1003-114	1366M 0.06kg	1003-123	1376M 0.07kg	1003-143
175	1327M 0.05kg	1003-075	1337M 0.02kg	1003-085	1347M 0.03kg	1003-095	1347MA 0.04kg	1003-105	1357M 0.05kg	1003-115	1367M 0.07kg	1003-124	1377M 0.08kg	1003-144
200	1328M 0.06kg	1003-076	1338M 0.02kg	1003-086	1348M 0.03kg	1003-096	1348MA 0.05kg	1003-106	1358M 0.06kg	1003-116	1368M 0.08kg	1003-125	1378M 0.10kg	1003-145
250									13510M 0.07kg	1003-117	13610M	1003-126	13710M 0.12kg	1003-146
300									13512M 0.09kg	1003-118	13612M	1003-127	13712M 0.15kg	1003-147



## Swivel Type Flange Nut With Disc Spring



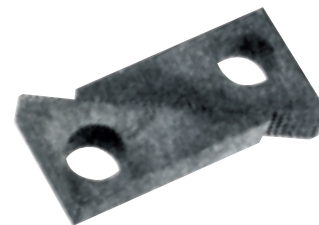
RESISTANT LOOSEN



ORDER NO.	THREAD	A	B	C	D	WEIGHT	CODE NO.
7512	M8x1.25	19	13M	19	14	0.03kg	1003-160
7513	M10x1.5	22	17M	22	17	0.03kg	1003-161
7514	M12x1.75	28	21M	28	22	0.03kg	1003-162
7514M	M14x2.0	28	21M	35	43	0.03kg	1003-163
7515	M16x2.0	35	28M	41	32	0.03kg	1003-164
7516	M18x2.5	41	32M	44	36	0.03kg	1003-165
7517	M20x2.5	44	32M	150	36	0.2kg	1003-166
7518	M24x3.0	50	41M	36	36	0.3kg	1003-167



## Step Block



mm

STANDARD STEEL BLOCK(25 WIDE A)/(31 WIDE B)				
ORDER NO.	CAPACITY OF FULL BLOCK	HEIGHT OF 13 BLOCK	WEIGHT	CODE NO.
5114	38 to 44	38	0.14kg	1003-170
5124	44 to 63	44	0.28kg	1003-171
5134	75 to 150	75	1.245kg	1003-172
HEAVY DUTY STEEL BLOCK 38mm WIDE				
5215	63 to 94	63	0.53kg	1003-173
5225	75 to 200	75	1.72kg	1003-174
5235	138 to 230	138	3.25kg	1003-175