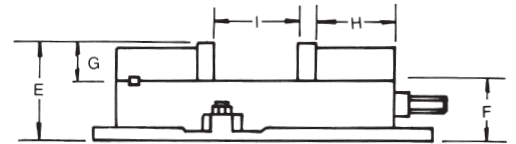
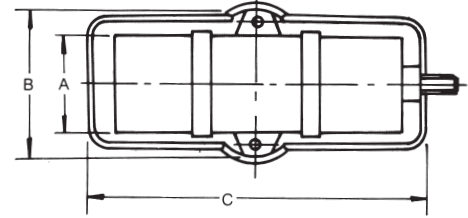
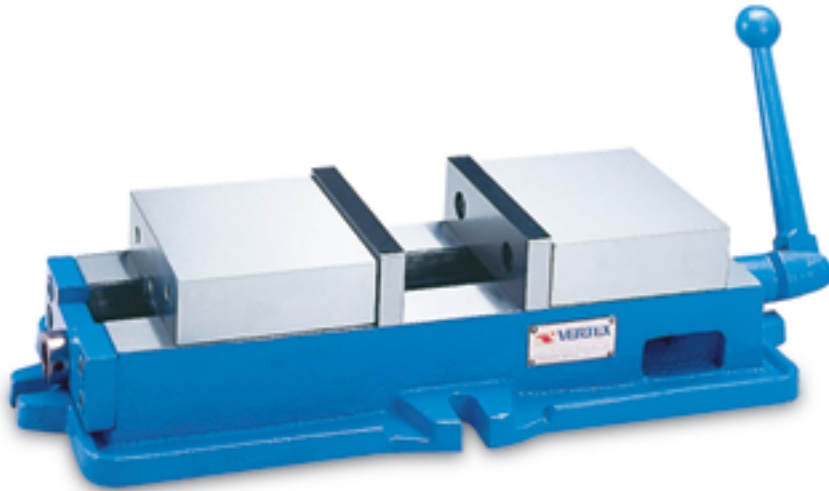




# Compound Ang-Fixed Vice

Suitable for irregular workpiece. Rapid and convenient centralizing.

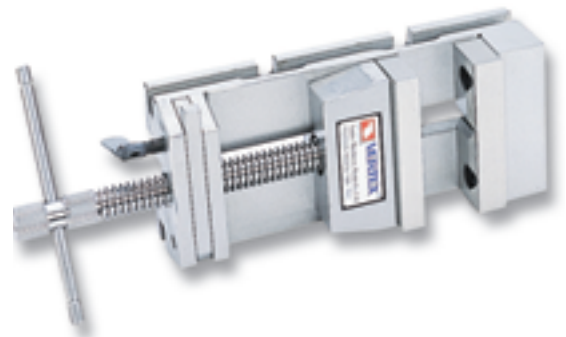
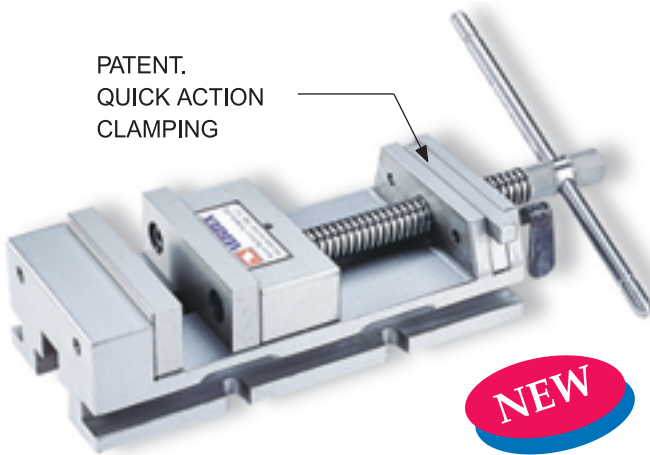


ORDER NO.	A	B	C	E	F	G	H	I	G.W. kgs	CUFT	CODE.NO.
VCV-6	150	210	430	120	70	48	120	155	52	1.8	1002-260



# Quick Setting Vice

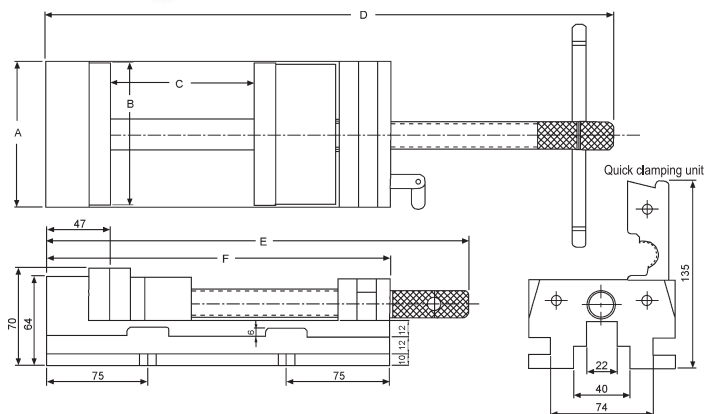
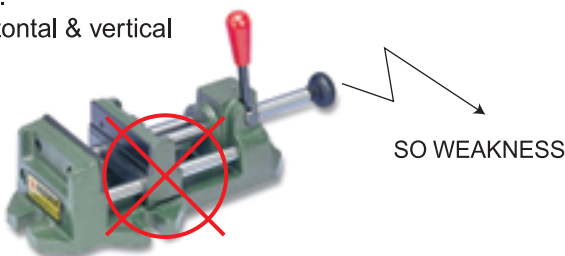
PATENT.  
QUICK ACTION  
CLAMPING



**NEW**

## FEATURES

1. Special design for quick clamping. (From the acme thread shaft stationly)
2. Quick setting by moving sliding. Big clamping capability.
3. Operations very quick and easy, can be increased efficiency for works very much.
4. Good for production or prototype work.
5. Suit for milling machine, grinder machine, precision drilling machine using.
6. Accurate grounded and assembled.
7. Precision cut acme thread, it can get 900kgs high claming force.
8. Horizontal & vertical



ORDER NO.	A	B	C	D	E	F	G.W.	CODE NO.
VQS-3	82	80	80	365	285	224	7	1002-262
VQS-4	106	104	104	411	309	250	8	1002-263
VQS-5	132	130	130	465	333	274	10	1002-264