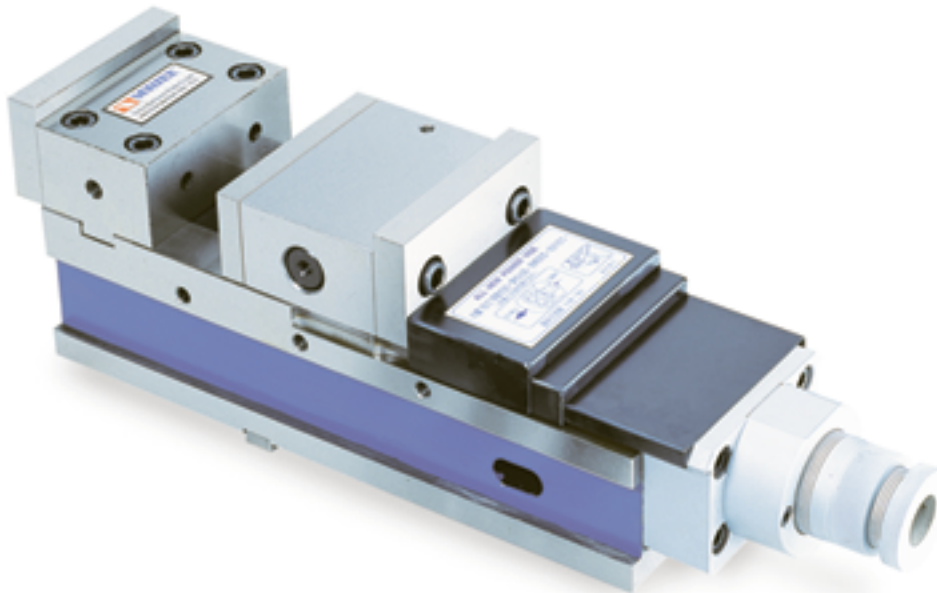




Mechanical Power Vise

HIGH CLAMPING POWER AND LARGE JAW CLAMPING CAPACITY



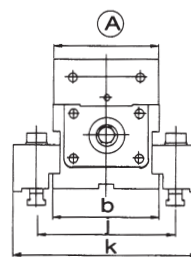
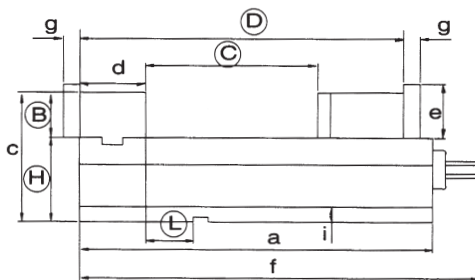
STANDARD ACCESSORIES



1. To solve all your clamping problems on your machining centers.
2. Tons of pressure can be applied to the workpiece with minimum operator's effort. Using the new POWER VISE", it can not release the workpiece until the operator manually releases it.
3. "Mechanical booster". Provides a steady clamping force against shocks and vibrations during the operations, since it clamps the workpiece resiliently with an aid of the "disc-springs" mounted inside.
4. Powerfull VMC-6Q clamping pressure can be increased up to 5500kg/cm²; VMC-5Q, 3500kg/cm²; VMC-4Q, 3000kg/cm² Clamping force freely adjusted with the guidance of graduation lines.

INSPECTION SPECIFICATION

NO.	Inspection Item	Per (100mm) 4"	Guaranteed
1	Parallelism:running face to bottom of bed.		0.01mm (0.0004")
2	Squareness:between running face and jaw plate.		0.03mm (0.0012")
※ 3	Squareness:both sides to fixed jaw plate.		0.02mm (0.0008")
4	Parallelism:keyways on bottom of bed to jaw plate.		0.02mm (0.0008")
5	Squareness:keyways on bottom of bed to jaw plate.		0.02mm (0.0008")
6	Parallelism:running face of the test block to bottom of bed.		0.02mm (0.0008")
	Lift can be controlled when clamping test block.		0.015mm (0.0006")



Unit:mm

ORDER NO.	A	B	C	D	a	b	c	d	e	f	g	j	i	k	H	L	Key way	Weight	CODE NO.
VMC-4Q	100	44	128	285	288	102	129	73	52	398	20	18	139	19	85 ±0.02	85 ±0.02	14	32 kgs	4005-001
VMC-5Q	125	53	203	382	385	127	153	78	63	508	20	18	164	216	85 ±0.02	85 ±0.02	18	49 kgs	4005-002
VMC-6Q	160	53	275	465	480	162	168	86	63	605	20	21	199	252	85 ±0.02	85 ±0.02	18	80 kgs	4005-003

* HORIZONTAL & VERTICAL 2 WAY VISE.

CLAMPING PRESSURE: VMC-4Q, 300kg/cm², VMC-5Q, 3500kg/cm², VMC-6Q, 5500kg/cm².