



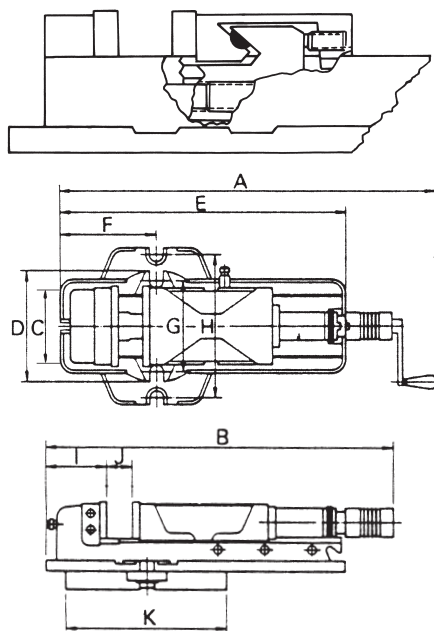
# Hydraulic Machine Vise Build Out Type



## FEATURES

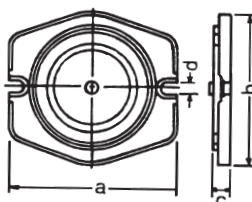
- Rigid material-vise body of ductile iron FCD 60JIS(equal to GGG 60) with 60kgs/mm<sup>2</sup> or 80,000 psi tensile strength.
- Vise bed flame hardened to HRC 45 and up takes up wear and maintain accuracy for long.
- For multiple use plural vises are available on tolerance of 0.01mm in the height of vise bed and in alignment of the clamping surface of the vise jaw at extra cost.
- Mechanical/hydraulic spindle without original clutch mechanism.
- Down thrust "Semi-sphere Segment" mechanism-eliminates jaw lift and work fillt.
- All surface ground.

Unit:mm



ORDER NO.	A	B	C	D	E	F	G	H	I	J	K	CLAMPING FORCE	N.W.	CODE.NO.
VHO-5	695 920	570 795	130	190	505	180	160	250	105	0- 220	260	3500kg	41kgs	1002-220
VHO-6	750 1060	625 935	160	240	625	208	196	300	125	0- 300	320	4000kg	63kgs	1002-221
VHO-8	830 1140	725 1035	200	280	700	265	240	360	165	0- 310	365	6000kg	102kgs	1002-228

### Swivel Base Optional

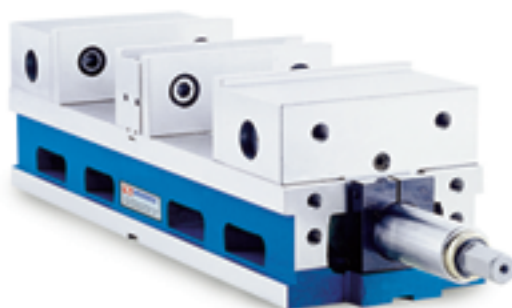


ORDER NO.	A	B	C	D	N.W.	CODE NO.
HSO-5	285	263	35	16	12.5 Kgs	1002-222
HSO-6	330	320	40	18	16.5 Kgs	1002-223
HSO-8	415	413	50	21	35Kgs	1002-229



# Double Clamp Vise

**NEW DESIGN & UNIQUE CONSTRUCTION.  
EXCLUSIVELY DESIGNED WITH COMBINATION OF  
MACHINABLE FIXTURE JAWS AND HARD JAWS**



### DOUBLE CLAMP SEAT:

One handle can simultaneously operate two movable jaws and clamps 2 pieces of workpiece of same size or different size or one large workpiece. This model can increase efficiency and productivity of CNC machine.

### HIGH & EXCELLENT RIGIDITY.

The vise is made of FCD. 80000 PSI (55 kg/cm<sup>2</sup>) Ductile iron, and the slide ways are hardened to HRC45. The rigid construction prevents the base from distortion. Precision made to high accuracy standard.

1. The whold body is precisely grounded and height tolerance is within 0.025m/m(0.001"), therefore several vises can be lined p for production
2. The movable jaws provide alignment to workpiece without jaw lift.
3. The height of jaw plate is 30% higher than the other vise with the same size.
4. There are 6 kinds of clamping ways to meet workpieces of different shapes and sizes.

Unit:mm

ORDER NO.	A	B	C	D	a	b	c	H	e	f	g	h	i	j	k	l	m	Guide Block	Weight (kgs)	CODE NO.
VMC-4D	102	45	18-76	0-57	380	104	110	65	107	497	16	29	25	115	170	54	22.5	18	20	4005-020
VMC-6D	152	58	34-102	0-68	495	154	140	90	135	610	18	46	30	165	220	68.4	31.8	18	63	4005-021