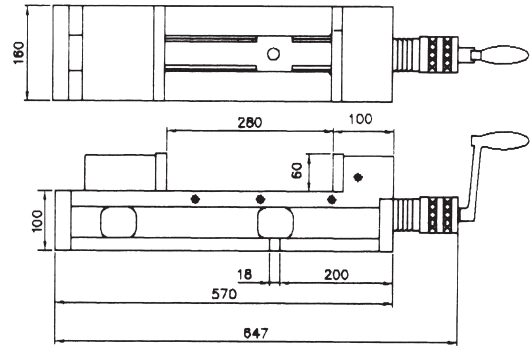
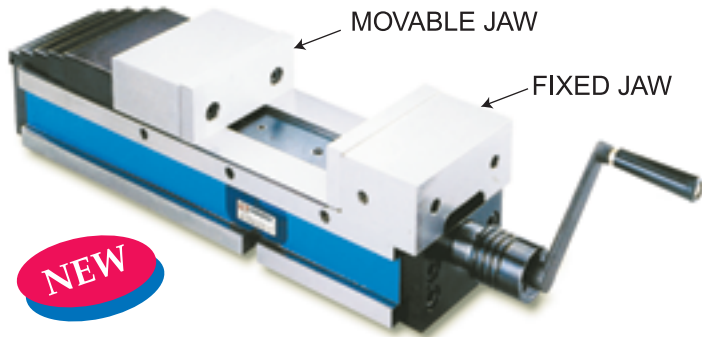


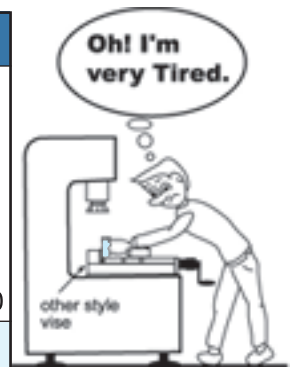


Convenience Hydraulic Machine Vise

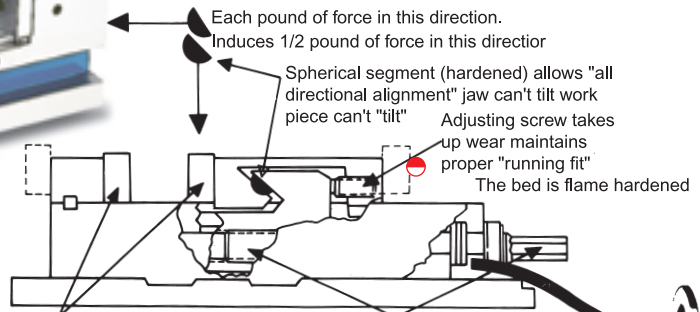
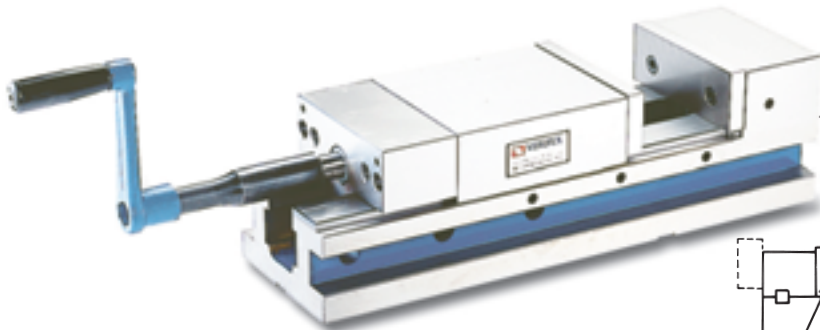


- Movable jaw located at outer end and "align surface" for workpiece is in front of operator. It is convenient for loading or unloading workpiece on such design of hydraulic vise.
- The overall length of this vise is shorter than other similar vises, but keep the same jaw opening. Save space on work table.
- Semi-spherical segment eliminates jaw lifting and workpiece tilting.
- Vise bed flame hardened to HRC 45 up is capable to obtain low weariness and last the high accuracy for long.
- Chip covers is applied on this vise to prevent from chips falling to Leadscrew and inside of vise.

ORDER NO.	VCH-160
WIDTH OF JAW	160mm
JAW OPENING	280mm
DEPTH OF JAWS	60mm
OVERALL LENGTH	647mm
CLAMPING FORCE	4500kgs
NET WEIGHT (KG)	60kgs
PACKING(MM)	700X185X180
CODE NO.	1002-200



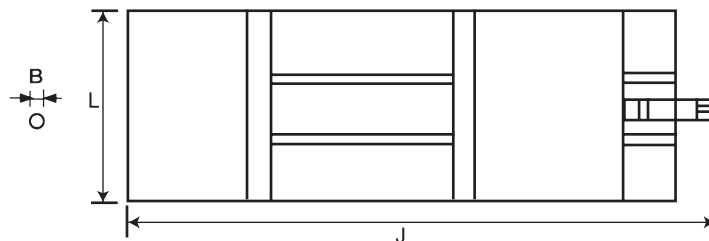
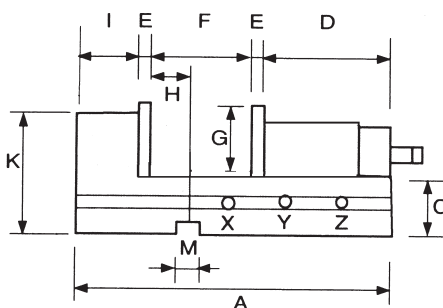
Hydraulic Ang-Fixed Vise



Moveable jaw plates (hardened and ground) increase capacity of 6" vise up to 14 1/2" in-out-side position (dotted lines)

Vies screw defies wear-enclosed for protection

Being thrust collar cuts friction and increases clamping pressure



ORDER NO.	A	B	C	D	E	F			G	H	I	J	K	L	M	CLAMPING FORCE	N.W.	CODE NO.
						X	Y	Z										
VAF-4	385	14	58	179	12.5	0-85	85-170	—	42	45	64.5	440	98	105	18	2500kg	22kg	1002-210
VAF-6	505	19	85	250	15.5	0-90	90-180	180-270	57	65	84.5	698	140	152	18	5000kg	50kg	1002-211
VAF-8	576	19	102	252	18.5	0-98	97-198	197-300	62	82	89.5	760	162	200	18	7000kg	80kg	1002-212