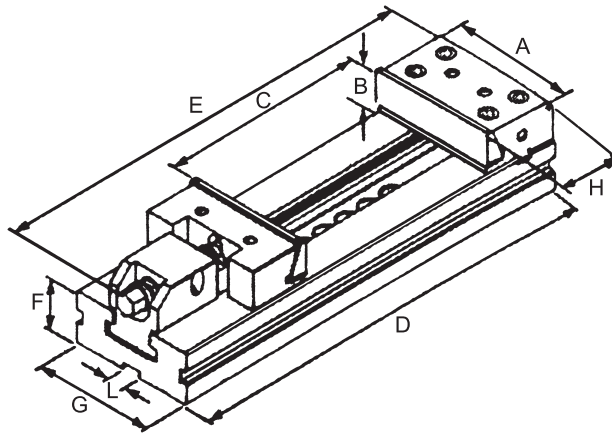
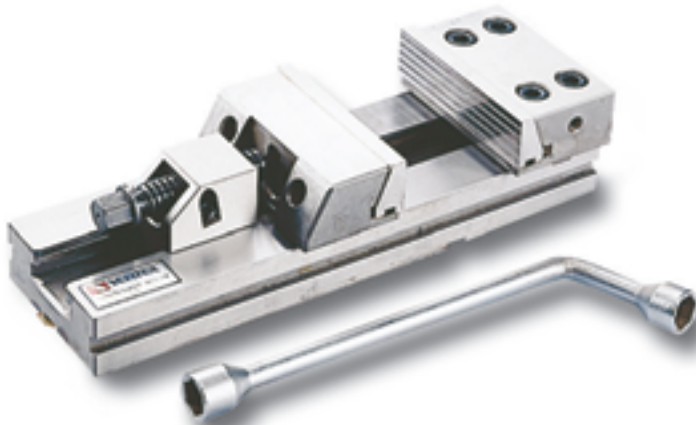




Modular Precision Machine Vises



FEATURES

- High Accuracy
- Unlimited Clamping Range
- High Quality Alloy Steel
- High Clamping Pressure
- EACH ONE IS SAME AS HEIGHT.
- CAN BE USED MULTIPLE STYLE.
- No Length of Height Limitations
- No Jaw Lift
- Low Profile
- All Vises are Matched
- Swivel base be optional

MODULAR VISES are manufactured under rigid quality control. Only the most suitable materials are used, and the accuracy of even the smallest components is assured. As a result of the high standard construction **MODULAR VISES** can be depended upon to maintain their accuracy under the most severe operating conditions. The modular design and the concept of interchangeability makes possible a wide variety of set up combinations.

| ORDER NO. | VMP-4 | VMP-5 | VMP-6 | VMP-7A | VMP-7B | VMP-7C | VMP-8B | VMP-8C |
|-----------------|----------|----------|----------|----------|----------|----------|----------|----------|
| A | 100 | 125 | 150 | 175 | 175 | 175 | 200 | 200 |
| B | 30 | 40 | 50 | 60 | 60 | 60 | 65 | 65 |
| C | 100 | 150 | 200 | 200 | 300 | 400 | 300 | 400 |
| D | 275 | 350 | 426 | 455 | 555 | 655 | 595 | 695 |
| E | 325 | 146 | 530 | 620 | 620 | 620 | 718 | 718 |
| F | 35 | 40 | 50 | 58 | 58 | 58 | 70 | 70 |
| G | 75 | 96 | 125 | 145 | 145 | 145 | 170 | 170 |
| H | 78 | 78 | 90 | 97 | 97 | 97 | 114 | 114 |
| I | 16 | 16 | 16 | 16 | 16 | 16 | 16 | 16 |
| KG | 7 | 18 | 29 | 38 | 43 | 48 | 69 | 74 |
| CODE NO. | 1002-190 | 1002-191 | 1002-192 | 1002-193 | 1002-194 | 1002-195 | 1002-197 | 1002-198 |