

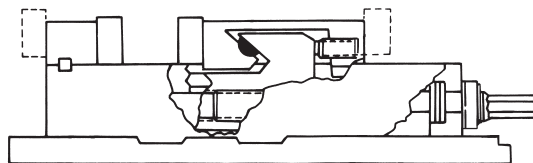
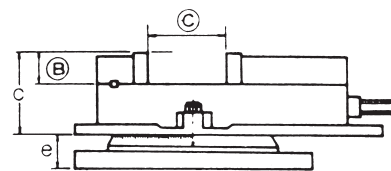
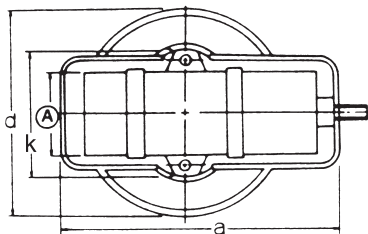


Ang-Fixed Milling Vise



NEW

VD-675, VD-810 is NEW
 VD-675 6" opened 7 1/2"
 VD-810 8" opened 10"



1. Use highest quality ductile Iron 80000 PSI for minimum bending.
2. The enclosed lead screw and sliding surface are hardened and grounded.
3. Highest clamping power. It's very accurate and durable.
4. This Vise is so designed that the horizontal force generated by tightening the handle pushes the semi-sphere within the movable jaw and thus thrusts the movable jaw downward.

Therefore, the workpiece does not move up, even if it is held at the top of the jaw plates.

5. Four setting positions of the jaw plates are available, widening the jaw plates opening.
6. The new VD675, VD810 have two major improvements: a wide opening jaw and a new stationary jaw that features an integral key larger fasteners which reduce deflection by 50%.

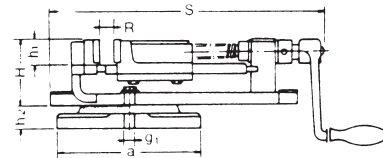
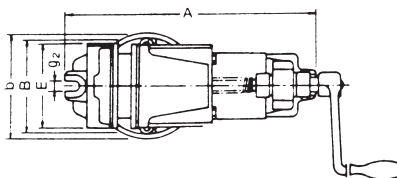
Order No. & Dimensions

Unit:mm/inches

ORDER NO.	A	B	C	a	k	c	d	e	f	Gross weight kg		Meas. CFT	CODE NO.
										plain	with swivel base		
VA-4	102 4 1/64	36 1 27/64	103 4 1/16	325 12 13/16	165 6 1/2	96 3 25/32	243 9 9/16	31 1 7/32	6 1/4	16 36	(C) 20	0.5	1002-030
VA-5	131 5 5/32	36 1 13/32	110 4 21/64	357 14 1/16	193 7 5/8	101 3 31/32	278 11	32 1 3/4	7 5/16	25 55	(C) 30	0.9	1002-031
VA-6	152 6	46 5 9/32	142 5 9/32	418 16 7/16	209 8 1/4	119 4 11/16	328 12 29/32	39 1 17/32	9 3/8	36 80	(C) 42	1.5	1002-032
VA-8	200 7 7/8	62 2 7/16	197 7 3/4	548 21 9/16	295 11 5/8	147 5 13/16	416 16 3/8	45 1 25/32	11 7/16	70 155	(W) 80	2.7	1020-033
VD675	152 6	38 1 1/2	190 7 1/2	552 21 3/4	295 11 5/8	134 5 5/16	381 15	47 1 7/8	11 7/8	37 82	(C) 43	1.5	1002-034
VD810	203 8	50 2	250 10"	552 21 3/4	295 11 5/8	134 5 5/16	381 15	47 1 7/8	11 7/8	70 155	(W) 102	2.7	1002-035



K-Type Milling Vise



1. It's a practical piece of equipment with excellent precision and a high quality finished.
2. Body, movable jaw and swivel base made of close-grained high tensile iron castings. Built for heavy duty machining and retained accuracy.
3. Jaw plates of hardened and ground tool steel.
4. It's the most suitable for the Milling, Grinding and Drilling.

Order No. & Dimensions

Unit:mm

ORDER NO.	E	A	B	H	R	S	a	b	h1	h2	g1	g2	G.W(kg)	Meas. CFT	CODE NO.
VK-4	100	267	106	75	62	295	160	114	30	25	13	13	(C)10	0.2	1002-040
VK-5	125	345	128	98	85	370	208	150	37	30	12	12	(C)17	0.5	1002-041
VK-6	150	421	160	105	114	462	245	175	40	40	16	16	(C)27	1.1	1002-042
VK-8	200	576	215	144	150	620	340	230	58	45	18	18	(W)57	1.5	1002-043