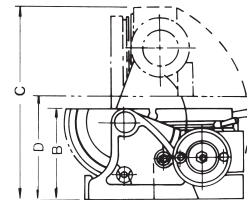
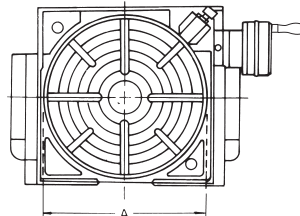
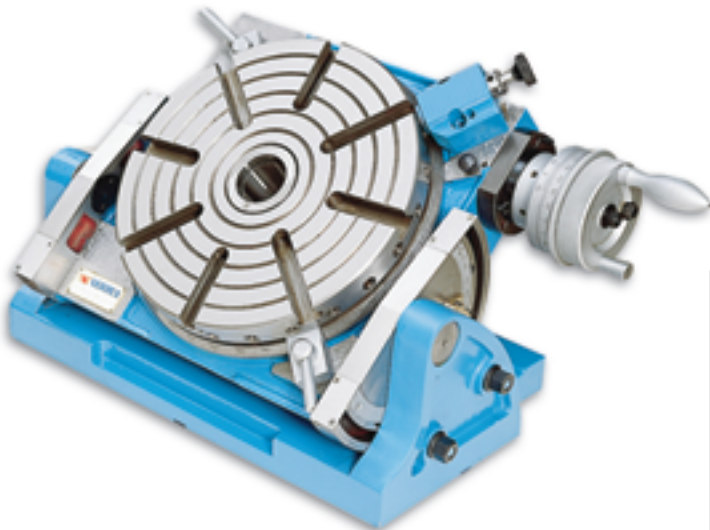




# Universal Tilting Rotary Table



## Order No. & Dimensions

ORDER NO.	VU-300
TABLE DIAMETER A	300mm
TABLE HEIGHT (horizontal) B	185mm
TABLE O/A HEIGHT (VERTICAL) C	370mm
CENTER HOLE	MT5
CENTER HEIGHT (vertical) D	208mm
DIRECT INDEXING	24-div.
GEAR RATIO	90:1
WEIGHT(G.W.)	102kg
WEIGHT(N.W.)	93.4kg

**ORDER NO. VU-300**      **CODE NO. 1001-010**

This is an accurate and slidly designed table for use on milling, boring and other machine tools. This table allows indexing, facing and other work to be carried out rapidly with extreme precision.

Tilting range 90 degrees from horizontal to vertical position, 1 rotation of handle equals 3 degrees, 5 minutes tilting reading.

- 10 Second Vernier Scale.
- Table Dial 1 Minute Graduations.
- Fast Degrees: Dividing Notch Pin & 24 Holes in 15 Degrees Around The insures Rapid Accurate Spacing.
- Minimum Set-Up time.
- Rugged Construction.

## SPECIAL ACCESSORIES

1.DIVIDING PLATE DP-5

2.TAILSTOCK

TSU-1 HEAVY-DUTY TYPE

TSU-2 ECONOMICAL TYPE

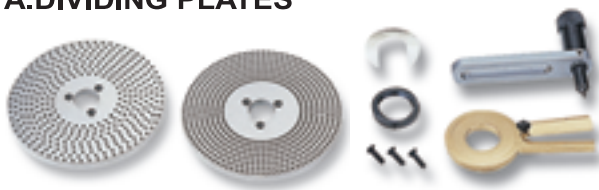
ORDER NO.	TSU-1
CODE NO.	1001-020
WEIGHT	23kg

ORDER NO.	TSU-2
CODE NO.	1001-021
WEIGHT	12kg



## SPECIAL ACCESSORIES

### A.DIVIDING PLATES



\*DP set include index plate. crank handle, 3 pcs screw, sector, & U Washer.

1 carton with 1 set. Gross weight:3.5kgs.

Meas.:0.13 CFT.

Number of the holes of Dividing Plates

ORDER NO.	WEIGHT	CODE NO.
*DP-1 for HV-4 HV-6 VU-100/150	1.4kg	1001-030
<b>A-PLATE</b>	15,16,17,18,19,20	
<b>B-PLATE</b>	21,23,27,29,31,33	
<b>C-PLATE</b>	37,39,41,43,47,49	

ORDER NO.	WEIGHT	CODE NO.
*DP-2 for HV <sup>HV</sup> RT -8 VU-200	4.5kg	1001-031
DP-3 for HV <sup>HV</sup> RT -10,12,14,16	4.5kg	1001-032
DP-4 for CS-6,8	4.5kg	1001-033
DP-5 for VU-300	4.5kg	1001-034

<b>A-PLATE</b>	26,30,34,38,41,44,47,51,57 28,32,37,39,43,46,49,53,59
<b>B-PLATE</b>	61,67,71,77,81,87,91,97 63,69,73,79,83,89,93,99

### B.TAILSTOCK

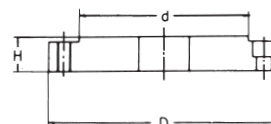


TS-1

Unit:mm

ORDER NO.	adjustable highest lowest	used of model	G.W kg	Meas. CFT	CODE NO.
TS-1	110 75	HV-4,HV-6,VSI-4 BS-0,VU-100 VU-150,VST-5	3.9	0.4	1001-022
TS-2	145 115	BS-1,CC-6 CS-6,HV-8 VU-200	12	0.4	1001-023
TS-3	200 130	CS-8,HV-10 HV-12	13.5	0.4	1001-024
TS-4	260 190	HV-14 HV-16	20	0.7	1001-025

### C.FLANGE



Unit:mm

ORDER NO.	D	d	H	used of model	WEIGHT	CODE NO.
FLT-0	138	100	20	RT- HV- 6,8	1.9	1001-040
FLT-1	170	130	21	RT- HV- 8,10	3.3	1001-041
FLT-2	195	155	24	RT- HV-10,12,14	5.2	1001-042
FLT-3	210	160	24	RT- HV-12,14,16	4.9	1001-043

FLT-0 For VSC-5  
FLT-1 For VSC-6  
FLT-2 For VSC-7  
FLT-3 For VSC-8